

OmniSwitch[®] 8800

Getting Started Guide

April 2004



Warning. Only personnel knowledgeable in basic electrical and mechanical procedures should install or maintain this equipment.

Lithium Batteries Caution. There is a danger of explosion if the Lithium battery in your chassis is incorrectly replaced. Replace the battery only with the same or equivalent type of battery recommended by the manufacturer. Dispose of used batteries according to the manufacturer's instructions. The manufacturer's instructions are as follows:

Return the module with the Lithium battery to Alcatel. The Lithium battery will be replaced at Alcatel's factory.

The features and specifications described in this guide are subject to change without notice.

Copyright © 2004 by Alcatel Internetworking, Inc. All rights reserved. This document may not be reproduced in whole or in part without the express written permission of Alcatel Internetworking, Inc.

Alcatel[®] and the Alcatel logo are registered trademarks of Alcatel. Xylan[®], OmniSwitch[®], OmniStack[®], and Alcatel OmniVista[®] are registered trademarks of Alcatel Internetworking, Inc.

OmniAccess[™], Omni Switch/Router[™], PolicyView[™], RouterView[™], SwitchManager[™], VoiceView[™], WebView[™], X-Cell[™], X-Vision[™], and the Xylan logo are trademarks of Alcatel Internetworking, Inc.

This OmniSwitch product contains components which may be covered by one or more of the following U.S. Patents:

- U.S. Patent No. 6,339,830
- U.S. Patent No. 6,070,243
- U.S. Patent No. 6,061,368
- U.S. Patent No. 5,394,402
- U.S. Patent No. 6,047,024
- U.S. Patent No. 6,314,106
- U.S. Patent No. 6,542,507



Alcatel Internetworking
26801 West Agoura Road
Calabasas, CA 91301
(818) 880-3500 FAX (818) 880-3505

US Customer Support: (800) 995-2696
International Customer Support: (818) 878-4507
Internet: <http://eservice.ind.alcatel.com>

Table of Contents

OmniSwitch 8800	1	Installing the Network Interface (NI) and Chassis Management Modules (CMMs)	13
Features	1	NI Modules	13
Hardware Features	1	CMMs	13
Availability Features	2	Installing MiniGBIC Connectors	16
Installing the Hardware	3	Installing Xenpak Modules	17
Items Required	3	Installing SFMs	18
Site Preparation	3	Blank Cover Plates	19
Environmental Requirements	3	Connections and Cabling	20
Electrical Requirements	3	Serial Connection to the Console/Modem Port	20
Weight Considerations	4	Serial Connection Default Settings	20
Items Included	4	EMP Cable Requirements	21
Unpacking and Installing the Switch	5	Booting the Switch	22
Unpacking the Chassis	5	Component LEDs	22
Recommendations	5	Your First Login Session	23
Chassis Removal Instructions	5	Logging In to the Switch	23
Power Supply Removal Instructions	6	Setting IP Address Information for the EMP	24
Lifting the Chassis	7	Unlocking Session Types	25
Mounting the Switch	7	Unlocking All Session Types	25
Airflow Considerations	7	Unlocking Specified Session Types	25
Module Access Considerations	8	How many sessions are allowed?	26
Rack-Mounting	8	Changing the Login Password	26
Stand-Alone	10	Setting the System Time Zone	27
Installing Power Supplies	10		
Using the Grounding Wrist Strap and Chassis Grounding Lug	12		

Setting the Date and Time	27
Setting Optional System Information	28
Specifying an Administrative Contact	28
Specifying a System Name	28
Specifying the Switch's Location	28
Viewing Your Changes	29
Saving Your Changes	29
Modifying the Serial Connection Settings	29
CLI Basics	31
CLI Assistance Features	31
Syntax Checking	31
Command Line (?) Help	32
Partial Keyword Completion	32
Deleting Characters	32
Inserting Characters	33
Previous Command Recall	33
Prefix Recognition	33
Prefix Prompt	34
Command History	34
Command Logging	35
Enabling Command Logging	35
Common CLI Commands	36
Offline Configuring	37
Syntax Checking	37
Scheduling a Configuration File to be Applied at a Later Time	37
Generating Snapshots of the Current Configuration	37

Files and Directories	38
Boot and Image Files	38
boot.params File	38
boot.cfg File	38
Image Files	39
Working and Certified Directories	40
Working Directory	40
Certified Directory	40
How can I tell which directory the switch is currently using?	41
Can I save changes to the Certified directory?	41
What happens when the switch boots? . . .	41
Working and Certified Are Identical	41
Working and Certified Are Different	42
My Working and Certified directories are different. Can I force a reboot from the Working directory?	42
Loading Software	43
Non-Redundant Configurations	43
Redundant Configurations	44

Using WebView	46
Browser Compatibility	46
Required Image Files	46
Logging In to WebView	47
Navigating WebView	47
Online Help	49
Additional Information	49
Troubleshooting	49
The WebView login screen does not display.	49
The login screen displays, but my login attempt fails.	49

Hardware Basics	50
Chassis Slot Numbering	50
Chassis Management Module (CMM)	51
CMM Redundancy	52
CMM Slot Locations	52
CMM Front Panel	53
Switch Fabric Module (SFM)	54
SFM Redundancy	54
SFM Slot Locations	54
SFM Front Panel	55
Network Interface (NI) Modules	56
ENI Modules	56
GNI Modules	56
Miniature Gigabit Interface Converters (MiniGBICs)	56

10GNI Modules	57
Xenpaks	57
OS8-ENI-C24 Front Panel	58
OS8-GNI-U8 Front Panel	59
OS8-GNI-C8 Front Panel	60
OS8-GNI-U24 Front Panel	61
OS8-GNI-C24 Front Panel	62
OS8-10GNI-UR1 Front Panel	63

User Documentation on CD	64
General Information	65

OmniSwitch 8800

Features

Alcatel's OmniSwitch 8800 switches offer high performance 10/100 Ethernet and Gigabit Ethernet capabilities, as well as embedded server load balancing for enterprise requirements.

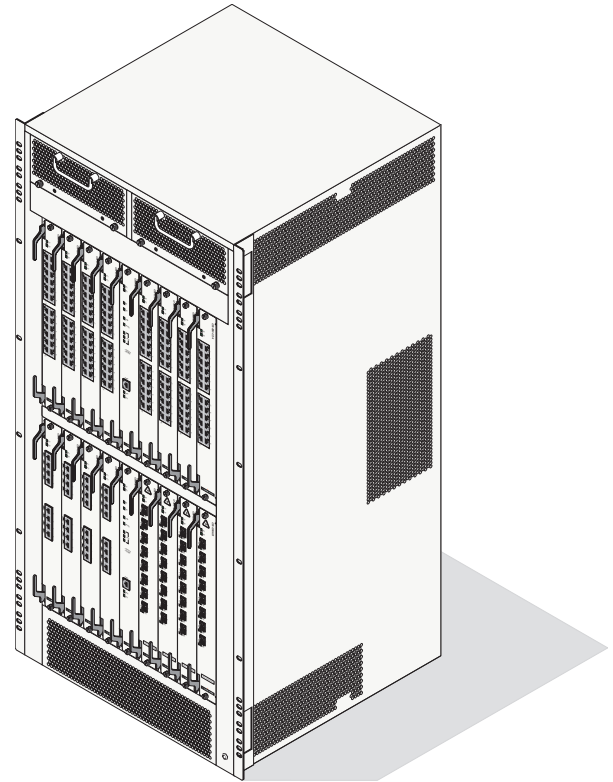
Both half-duplex and full-duplex modes are supported on all 10/100 Ethernet ports; full-duplex mode is supported on Gigabit Ethernet and 10 Gigabit Ethernet ports.

Hardware Features

The OmniSwitch 8800 is an 18-slot switch designed for the medium enterprise core or large wiring closet. The OmniSwitch 8800 offers up to 384 10/100 Ethernet ports, up to 384 Gigabit Ethernet ports, or up to 16 10 Gigabit Ethernet ports for use as a core switch.

The OmniSwitch 8800 chassis contains the following major components:

- 16 Network Interface (NI) module slots
- Two Chassis Management Module (CMM) slots
- Five Switch Fabric Module (SFM) slots
- Two chassis (front) fan trays
- One fabric (rear) fan tray
- Power supply slot holding up to four power supplies



OmniSwitch 8800

Availability Features

Availability ensures that your switch is consistently operational for your day-to-day networking needs. This added reliability is provided through redundant components for critical hardware and software subsystems. OmniSwitch 8800 switches provide a broad variety of availability features, including:

- Software Redundancy
- Hardware Redundancy
- Configuration Redundancy
- Link Redundancy
- Smart Continuous Switching
- NI Module Forwarding During CMM Failover
- Image Rollback
- Hot Swapping
- Hardware Monitoring
- Power Checking Sequence

For more information on Availability features, refer to the *OmniSwitch 8800 Hardware Users Guide*, the *OmniSwitch 7700/7800/8800 Switch Management Guide*, and the *OmniSwitch 7700/7800/8800 Network Configuration Guide*.

Installing the Hardware

Items Required

- Grounding wrist strap (included)
- Phillips screwdriver (not included)
- Flat-blade screwdriver (not included)
- Serial cable (not included)

Site Preparation

Environmental Requirements

OmniSwitch 8800 switches have the following environmental and airflow requirements:

- The installation site must maintain a temperature between 0° and 45° Celsius (32° and 122° Fahrenheit) and not exceed 95 percent maximum humidity (noncondensing) at any time.
- Be sure to allow adequate room for proper air ventilation at the front, back, and sides of the switch. Refer to [“Mounting the Switch” on page 7](#) for minimum clearance requirements. No clearance is necessary at the top or bottom of the chassis.

Electrical Requirements

OmniSwitch 8800 switches have the following general electrical requirements:

- Each switch requires one grounded AC outlet for each power supply (up to four) installed in the chassis. OmniSwitch 8800 switches offer both AC and DC power supply support. Refer to the *OmniSwitch 8800 Hardware Users Guide* for more information.
- For switches using AC power connections, each supplied AC power cord is 2 meters (approximately 6.5 feet) long. Do not use extension cords.

Caution. In North America, OmniSwitch 8800 power supplies require 220 Volt power cords connected to 220 Volt power receptacles. Do *not* use 110 Volt power cords or receptacles.

Redundant AC Power. If possible, it is recommended that each AC outlet resides on a separate circuit. With redundant AC, if a single circuit fails, the switch’s remaining power supplies (on separate circuits) will likely be unaffected and can therefore continue operating.

Weight Considerations

When fully-populated (i.e., with all CMM, SFM, and NI modules, fan trays and power supplies installed), the OmniSwitch 8800 weighs approximately 220 lbs (100 Kgs).

Items Included

Your OmniSwitch 8800 order includes the following items:

- OmniSwitch chassis with factory-installed power supplies per order
- CMM module(s) per order
- Factory-installed SFM modules per order
- NI modules per order
- MiniGBICs per order, if applicable
- Xenpaks per order, if applicable
- Blank cover panels, if applicable
- Grounding wrist strap
- Power cord(s) per order, if applicable

- Hardcopy *OmniSwitch 8800 Getting Started Guide*
- Documentation CD containing the following manuals:

OmniSwitch 8800 Getting Started Guide

OmniSwitch 8800 Hardware Users Guide

OmniSwitch CLI Reference Guide

OmniSwitch 7700/7800/8800 Switch Management Guide

OmniSwitch 7700/7800/8800 Network Configuration Guide

OmniSwitch 7700/7800/8800 Advanced Routing Configuration Guide

Unpacking and Installing the Switch

Unpacking the Chassis

To protect your switch components from electrostatic discharge (ESD) and physical damage, read all unpacking recommendations and instructions carefully before beginning.

Recommendations

- Unpack your OmniSwitch chassis as close as possible to the location where it will be installed.
- Network Interface (NI) modules and Chassis Management Modules (CMMs) are packaged in separate boxes. In order to greatly reduce exposure to electrostatic discharge (ESD) and physical damage, *do not* unpack these boxes until the CMMs and NI modules are ready to be installed.

Chassis Removal Instructions

- 1** Begin by carefully cutting the tape along the seam marked “OPEN HERE FIRST.”
- 2** Lift the box’s top flaps. Remove the smaller boxes that are enclosed and set them aside. These smaller boxes contain the Ship Kit.
- 3** Next, completely remove the four white plastic inserts (two on the front and two on the back) from the sides of the box. Removing these inserts allows the overpack to be removed.

Caution. Do not attempt to lift the chassis with the white plastic inserts.

4 The overpack is the outer shell of the packaging. Lift the overpack straight up until it slides free from the rest of the packaging. This allows easy access to the chassis.

5 Remove the two rack-mounting brackets for 19-inch racks.

Note. See “[Rack-Mounting](#)” on page 8 for more information on installing the rack-mounting brackets.

6 Carefully remove the protective plastic from the switch chassis.

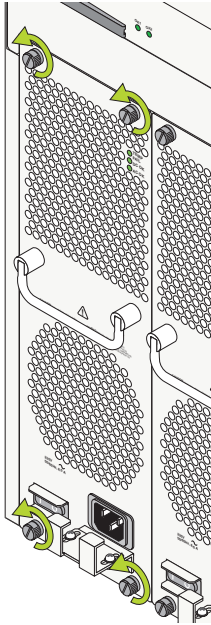
7 In order to reduce the weight of the chassis, it is recommended that you remove all factory-installed power supplies prior to lifting it from the packaging.

8 Continue to “[Power Supply Removal Instructions](#)” on page 6.

Note. The subsection below applies to power supplies that are newly-shipped in the switch chassis. They have no power cords attached and the on/off switches are in the off (O) position. For instructions on removing power supplies that are currently operating in an existing switch, refer to your *OmniSwitch 8800 Hardware Users Guide*.

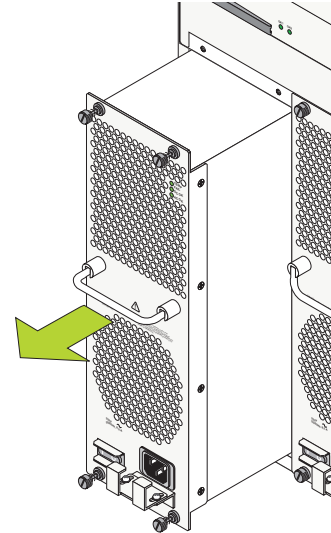
Power Supply Removal Instructions

1 Loosen the four captive screws, located at the four corners of the power supply's front panel. If necessary, use a flat-blade screwdriver to loosen the screws. Be sure that all captive screws are completely disengaged from the threaded holes in the chassis before continuing.



Note. Alcatel provides factory-installed blank cover plates for empty module slots. Do not remove these cover plates as they play an important role in chassis ventilation.

2 With one hand, grasp the handle at the front of the power supply and slowly pull the power supply out of the power supply bay. *Do not pull the power supply completely out of the bay with one hand.*



3 When the power supply is pulled out far enough (about 10 inches), place your other hand under the power supply casing to support its weight.

4 Continue pulling the power supply out until it is removed from the chassis.

5 Set the power supply aside on a clean, static-free surface. You will need to re-install it later.

6 Remove all remaining power supplies by repeating steps 1 through 5.

7 Continue to [“Lifting the Chassis”](#) on page 7.

Lifting the Chassis

Once its weight has been reduced by removing the power supplies, the chassis can be lifted from the packaging material and moved to the location where it is to be installed (see important note below).

Important. Two people are required when lifting the chassis. Due to its weight, lifting the chassis unassisted can cause personal injury.

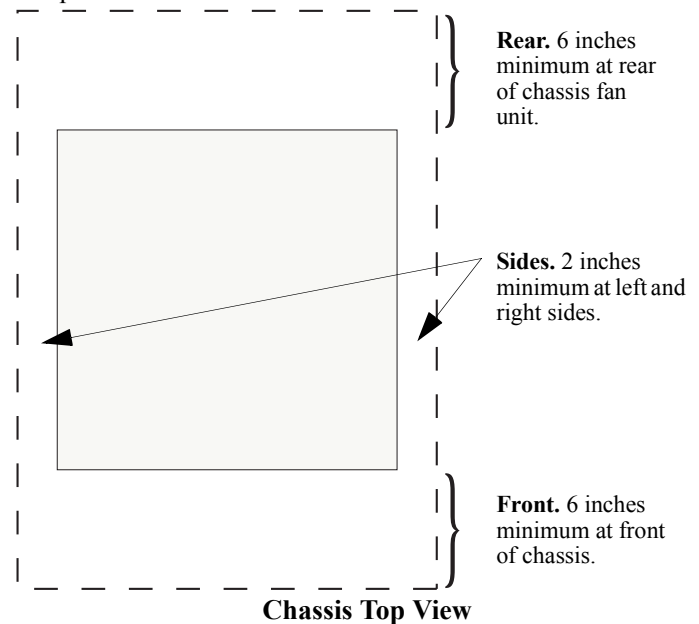
Continue to the next section, “Mounting the Switch.”

Mounting the Switch

Note. Due to their weight, access, and airflow requirements, OmniSwitch 8800 switches cannot be wall-mounted.

Airflow Considerations

Be sure that your switch is placed in a well-ventilated, static-free environment. Always allow adequate clearance at the front and sides of the switch, as well as behind the switch’s fan unit (located at the top-rear of the chassis). The following top-view diagram shows recommended minimum clearances for adequate airflow.



Never obstruct the air intake vents located at the bottom-front and bottom-sides of the chassis or the fan unit's air output vents located at the rear of the chassis.

Note. Clearance is not required at the top and bottom of the chassis.

Module Access Considerations

If the switch will be mounted in rack that is immobile, make sure that you have adequate clearance to install and remove modules on the front and rear of the chassis. Please allow enough clearance to install and remove the front fan trays, which are approximately 15.8 inches long, are the longest modules on the front. And please allow enough clearance to remove the Switch Fabric Modules (SFMs) and power supplies, which are approximately 6 inches long.

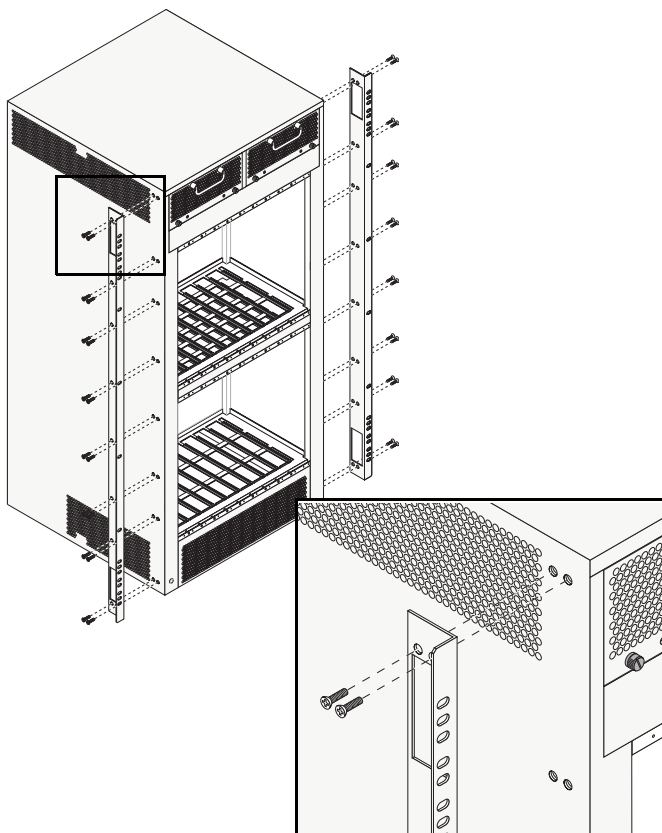
Rack-Mounting

Refer to the important guidelines below before installing the OmniSwitch chassis in a rack.

- Rack-mounting the chassis requires three people—two people to hold the chassis and position it in the rack and a third person to secure the chassis to the rack using the attachment screws.
- Alcatel does not provide rack-mount screws. Use the screws supplied by the rack vendor.
- To prevent a rack from becoming top heavy, it is recommended that you install the switch at the bottom of the rack whenever possible.
- If you are installing the switch in a relay rack, be sure to install and secure the rack per the rack manufacturer's specifications.
- Refer to [page 7](#) for important chassis airflow recommendations before installing.

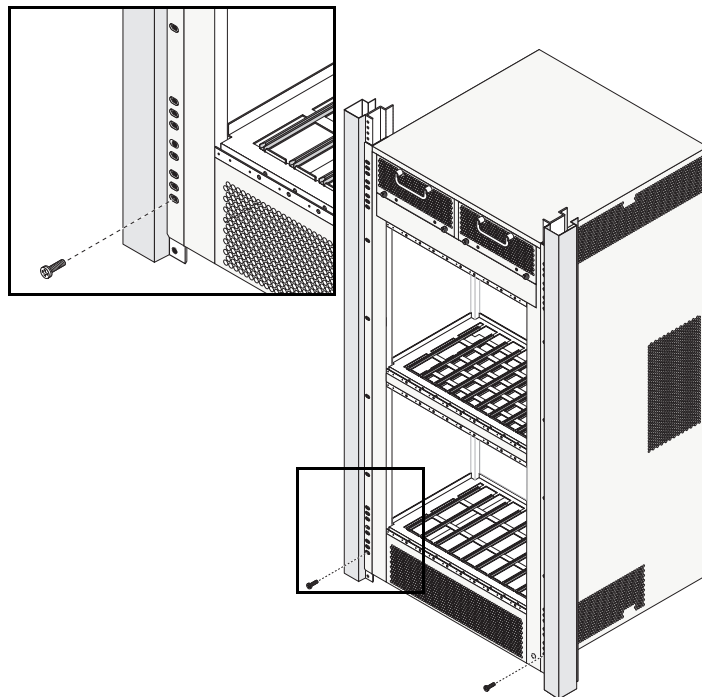
To rack-mount the switch, follow the steps below.

- 1** Using the rack-mounting brackets as a template, mark the holes on the rack where the chassis is to be installed.
- 2** Attach one rack-mounting bracket to the front end of the chassis using the Phillips-head screws that came with the chassis. See the figure below for the positioning and placement of these brackets and screws.



- 3** Attach the second bracket to the opposite front side of the chassis using the remaining screws.
- 4** Using two people, lift and position the chassis until the rack-mount brackets are flush with the rack post.
- 5** Align the holes in the brackets with the rack holes you marked in step 1.

6 Once the holes are aligned, use a third person to insert a screw through the *bottom hole on each bracket*. Tighten both screws until they are secure.



Note. Be sure to install the screws in the *bottom hole* of each bracket, as shown, before proceeding.

7 Once the screws at the bottom of each bracket are secure, install the remaining screws. Be sure that all screws are securely tightened.

Stand-Alone

The OmniSwitch 8800 can be installed unmounted as a stand-alone unit. Be sure that the installation location is a stable, flat surface that can accommodate the *fully-populated* weight of all switches being installed. One fully-populated OmniSwitch 8800 weighs approximately 220 lbs (100 Kgs).

Note. OmniSwitch 8800 switches must be installed “right side up.” Never attempt to operate a switch while it is lying on its side.

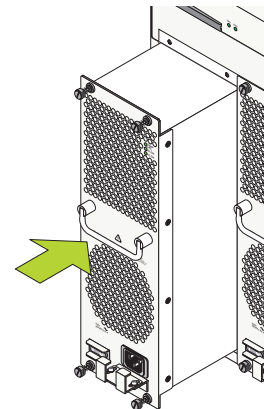
To install the switch as a stand-alone unit, follow the steps below:

- 1 Use two or more people to move and position the unpopulated chassis upright on the floor or bench where it is to be installed.
- 2 Be sure that adequate clearance has been provided for chassis airflow and that you have placed the chassis within reach of all required AC outlets. For recommended airflow allowances, refer to [page 7](#). For environmental and electrical requirements, refer to [page 3](#).

Installing Power Supplies

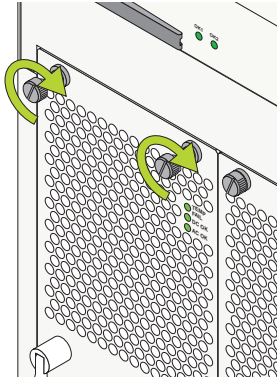
Reinstall the power supplies in the chassis power supply bays by following the steps below.

- 1 Be sure that you do not install the power supply upside down. When orienting the power supply, note that the on/off switch and power cord socket are located at the *bottom* of the power supply and the fan is located at the *top* of the power supply.
- 2 With one hand, grasp the handle at the front of the power supply. Place your other hand under the power supply casing to support its weight.
- 3 Carefully insert the rear of the casing into the power supply bay and slide the power supply back until its connector meets the chassis backplane connector.



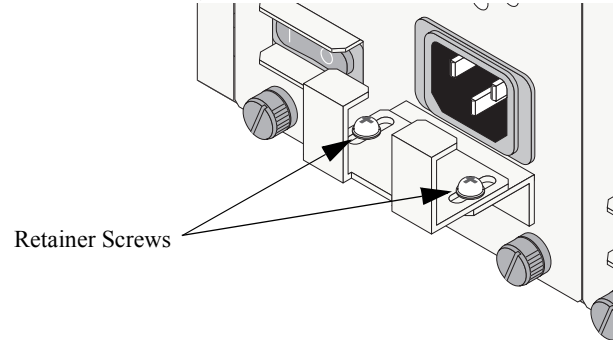
4 Continue sliding the power supply back until the front panel meets the front of the chassis. *Do not force the power supply into the bay. Otherwise you can damage the connectors.*

5 Tighten the four captive screws, located at the four corners of the power supply's front panel. *Be sure not to overtighten the captive screws. If you use a screwdriver, the torque used to tighten the screws must not exceed 2.3 inch pounds.*

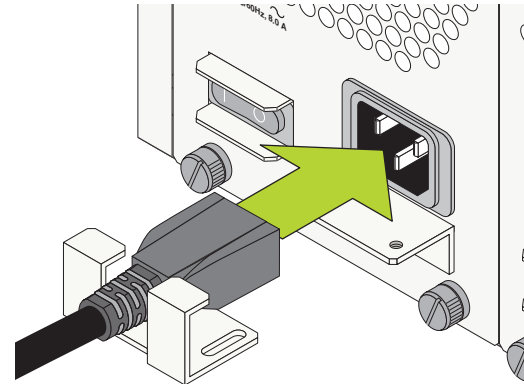


6 Verify that the power supply's on/off switch is in the off (O) position.

7 Remove the two screws on the top of the power cord retainer with a Phillips-head screwdriver. Do not discard these screws; you will need to reinstall them later.

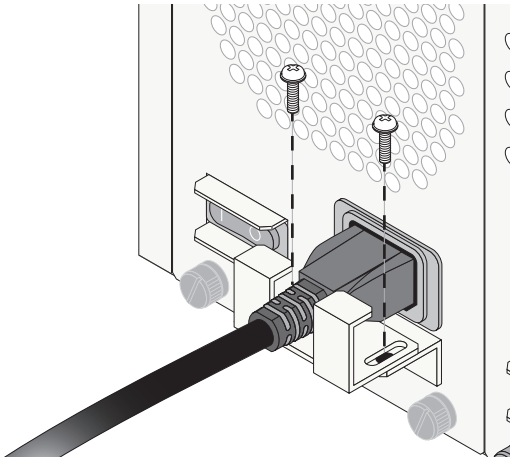


8 Slide the end of the power cord through the top portion of the retainer until it stops.



9 Plug the other end of the power cord into the power supply's socket. Make sure that the power cord is attached securely to the outlet.

10 Use a Phillips-head screwdriver to attach the top portion of the retainer with the two Phillips-head screws.



11 Once the power cord is secured in the retainer, plug the power cord into an easily-accessible, *properly grounded* outlet. *Do not use an extension cord.*

12 Install all remaining power supplies by repeating steps 1 through 11 for each power supply.

Note. For OmniSwitch 8800 switches using DC power, the power cord connector snaps into the connector socket. A cable retainer is not used.

Important. *Do not* turn on the power supplies at this time.

Using the Grounding Wrist Strap and Chassis Grounding Lug

Because electrostatic discharge (ESD) can damage switch components such as the Network Interface (NI) and Chassis Management Modules, you must ground yourself properly before continuing with the hardware installation.

For this purpose, Alcatel provides a grounding wrist strap and a grounding lug located near the bottom-right of the chassis. To properly ground yourself, follow the steps below.

- 1** Fasten the provided grounding strap to your wrist.
- 2** Insert the wrist strap's connector pin (located at the end of the strap's tether) into the grounding lug near the bottom-right of the chassis, as shown.

Installing the Network Interface (NI) and Chassis Management Modules (CMMs)

Once you are properly grounded, you may begin installing the Network Interface (NI) and CMM(s).

Note. See “[Installing SFMs](#)” on [page 18](#) for information on installing SFMs.

NI Modules

NI modules may be installed in any slot position from 1 through 16 in OS8800 switches.

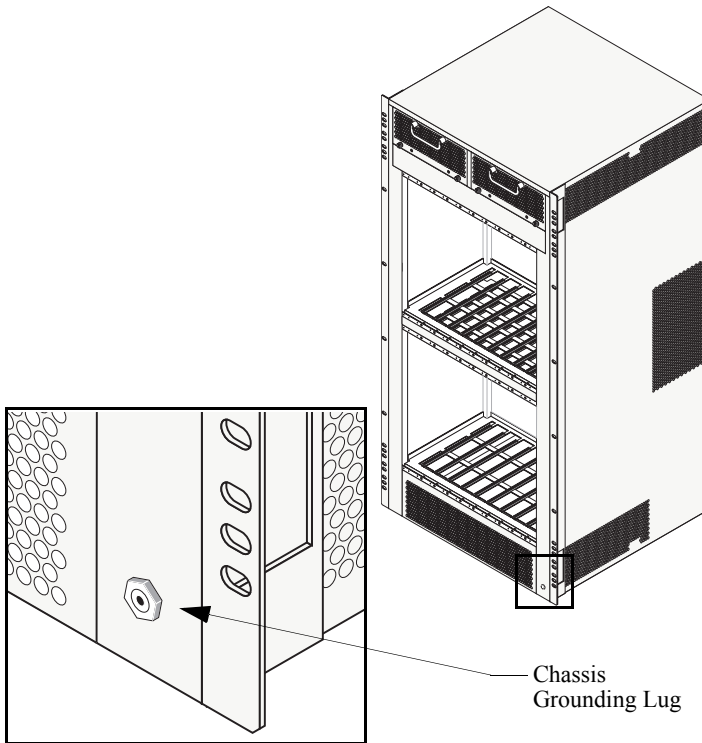
CMMs

CMMs may be installed in slots A or B in OS8800 switches. A minimum of one CMM is required for switch operations; the second CMM provides redundancy.

In non-redundant configurations, the CMM may be installed in either slot A or B. In redundant configurations, the CMM installed in slot A will be designated *primary* by default. For more information on redundancy, refer to [page 52](#) or, for detailed information, refer to your *OmniSwitch 8800 Hardware Users Guide*.

NI modules cannot be installed in CMM slots A or B; likewise, CMMs cannot be installed in any NI slot position.

More Information on Slot Numbering. For a diagram showing the chassis layout and slot positions, refer to “[Chassis Slot Numbering](#)” on [page 50](#).”



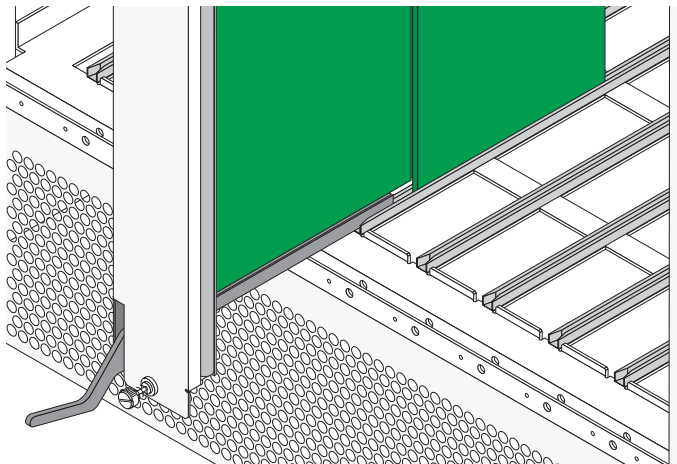
Important. For the grounding wrist strap to be effective in eliminating ESD, the power supplies must be installed in the chassis and plugged into grounded AC outlets as described on [page 10](#).

Note. To further reduce exposure to electrostatic discharge (ESD) and physical damage, do not remove more than one module at a time from the factory packaging. Unpack one module, immediately install the module in the chassis, then repeat the sequence for another module.

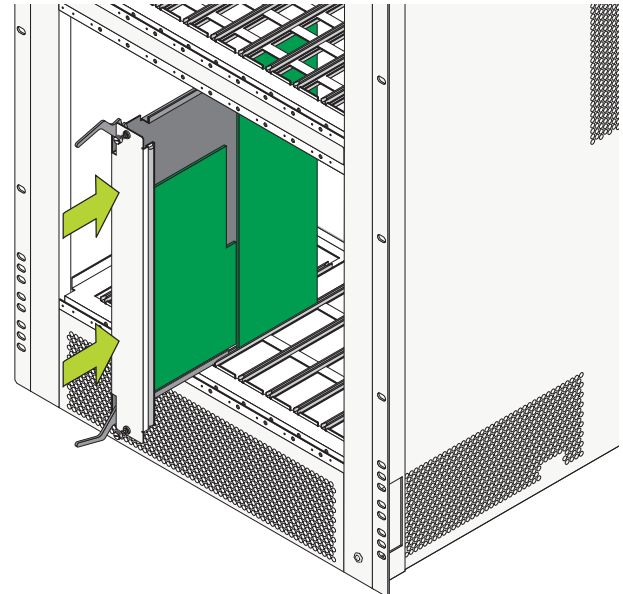
To install an NI or CMM module, follow the steps below.

Before beginning, note that the CMM modules and NI modules slide into the chassis card guides differently. With CMMs, the back of the module's printed circuit board (which is wider than the front side) initially provides the glide path. When the printed circuit board narrows a sheet metal flange continues the remaining glide path. With NIs, the edges of the module's printed circuit board slide into the guides.

- 1** Holding the module in both hands, carefully slide it into the chassis card guide. The component side of the board should face right.

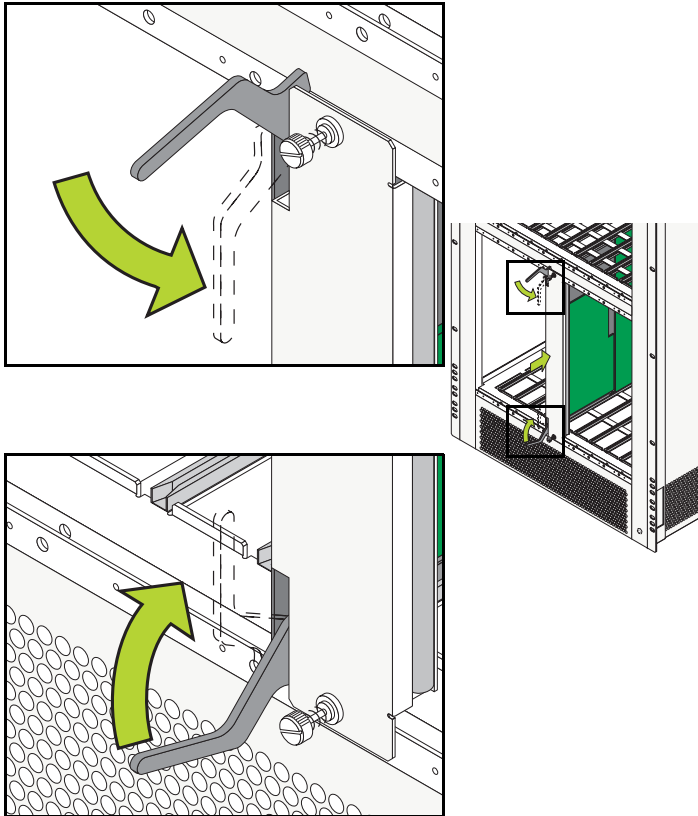


CMM Glide Path

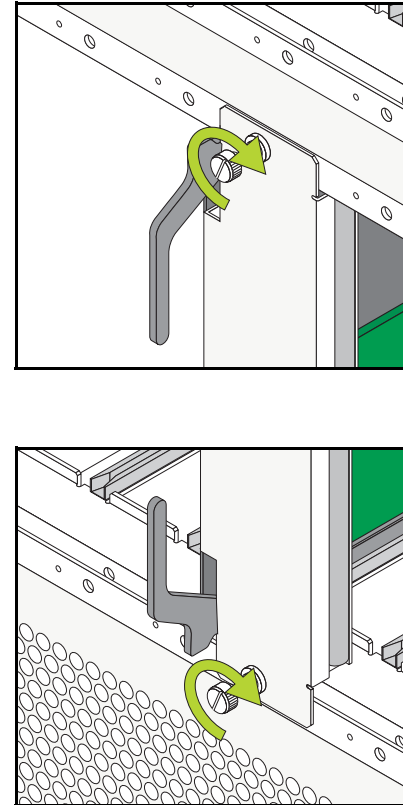


- 2** The module should slide in easily. Do not force the module into the slot. If any resistance is encountered, ensure the module is aligned properly in the card guide. Also, see the important note regarding chassis card guides on [page 14](#).

3 When the module is nearly seated in the slot, be sure that the two extractor levers—one on top of the module and one on the bottom—are slightly opened (approximately 30 degrees). This allows the notch on each extractor lever to grasp the rail on the chassis. Once the notches have grasped the rail, press both extractor levers simultaneously until the module is firmly seated.



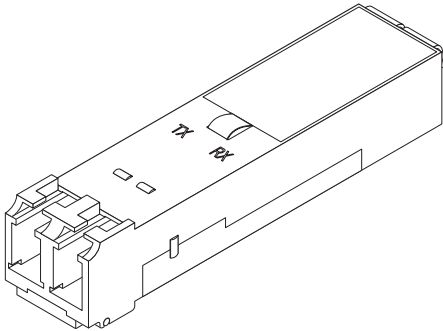
4 Once the module is firmly seated, secure the module to the chassis by tightening the two captive screws. *Be sure not to overtighten the captive screws. If you use a screwdriver, the torque used to tighten the screws must not exceed 2.3 inch pounds.*



5 Install all remaining modules by repeating steps 1 through 4 for each module.

Installing MiniGBIC Connectors

If you are installing an OS8-GNI-U8 or OS8-GNI-U24 module, you must install Miniature Gigabit Interface Converters (MiniGBICs) as required. These MiniGBICs are packaged separately.

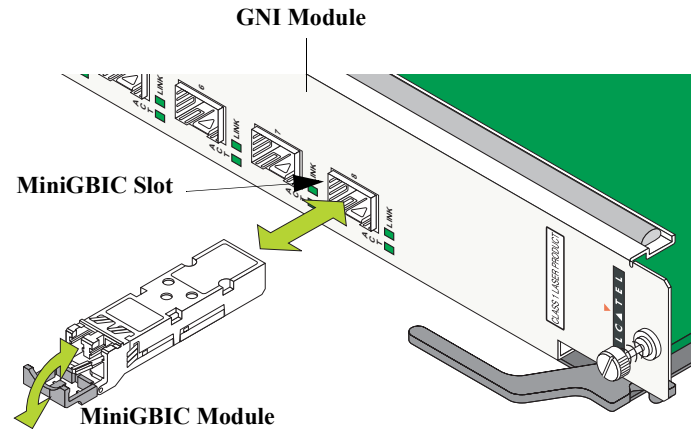


MiniGBIC Module

To install a MiniGBIC follow the steps below.

- 1** Be sure you have eliminated ESD by using the provided grounding wrist strap. Refer to [“Using the Grounding Wrist Strap and Chassis Grounding Lug”](#) on page 12 for more information.
- 2** Holding the MiniGBIC by its sides, carefully slide it into the desired GNI module universal MiniGBIC slot.

- 3** Push the MiniGBIC into the slot until it clicks into place.



Note. There is a small removal handle at the front of the MiniGBIC transceiver. To remove a MiniGBIC, carefully lift this handle; then, grasp the handle and carefully pull the MiniGBIC from the module.

Caution. The MiniGBIC should slide in easily. Do not force it into the slot. If any resistance is encountered, ensure the MiniGBIC is aligned properly. Forcing the MiniGBIC into the slot can damage the unit, as well as components on your GNI module.

Installing Xenpak Modules

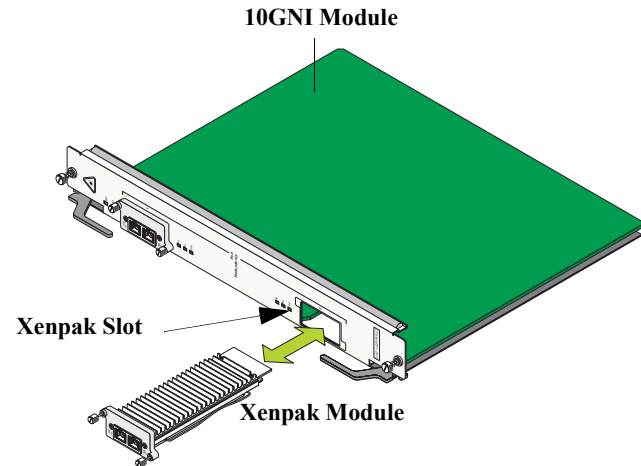
If you are installing an OS8-10GNI-UR1, you must install Xenpaks (10 Gigabit Ethernet modules) as required. These Xenpaks are packaged separately.

Xenpak Module

To install a Xenpak follow the steps below.

- 1** Be sure you have eliminated ESD by using the provided grounding wrist strap. Refer to [“Using the Grounding Wrist Strap and Chassis Grounding Lug”](#) on [page 12](#) for more information.
- 2** Remove the blank slot cover plate from the OS8-10GNI-UR1’s front face and set the cover plate and screws aside.

- 3** Align the groove on the XENPAK module with the guide rails on the OS8-10GNI-UR1’s circuit board as shown below:



- 4** Holding the Xenpak by its sides, carefully slide it into the desired Xenpak slot.

Caution. The Xenpak should slide in easily. Do not force it into the slot. If any resistance is encountered, ensure the Xenpak is aligned properly. Forcing the Xenpak into the slot can damage the unit, as well as components on your module.

Installing SFMs

Once you are properly grounded, you may begin installing the Switch Fabric Modules (SFMs) on the back side of the chassis. Because electrostatic discharge (ESD) can damage switch components such as the Switch Fabric Modules, you must always ground yourself properly before removing or adding a module. Refer to [page 12](#) for more information.

Note. See “[Installing the Network Interface \(NI\) and Chassis Management Modules \(CMMs\)](#)” on [page 13](#) for information on installing CMMs and NIs.

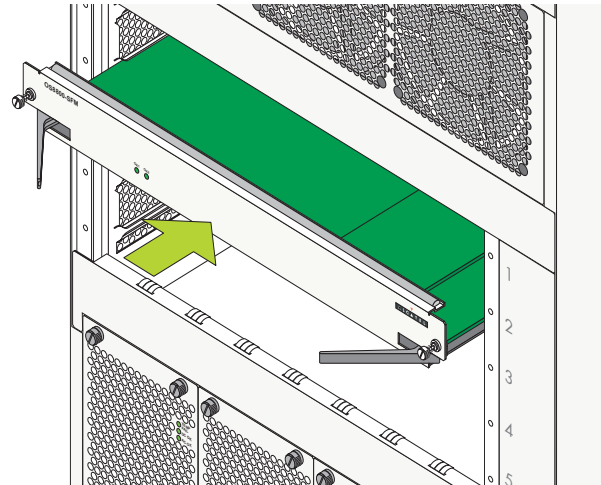
SFMs may be installed in SFM slots 1 through 5. A minimum of four (4) SFMs are required for switch operations; the fifth SFM provides redundancy. For more information on redundancy, refer to [page 52](#) or, for detailed information, refer to your *OmniSwitch 8800 Hardware Users Guide*.

More Information on Slot Numbering. For a diagram showing the chassis layout and slot positions, refer to [page 51](#).

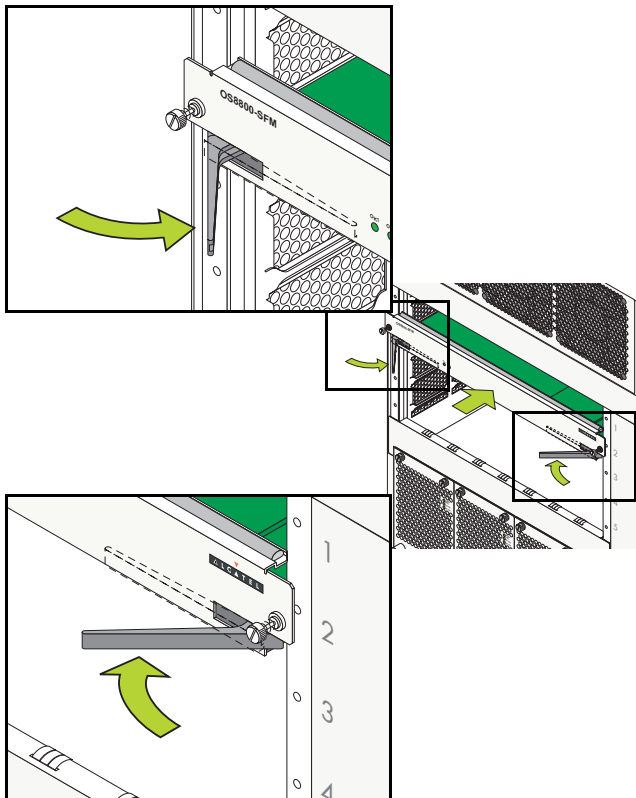
To install an SFM, follow the steps here.

Note. To further reduce exposure to electrostatic discharge (ESD) and physical damage, do not remove more than one SFM at a time from the factory packaging. Unpack one SFM, immediately install the SFM in the chassis, then repeat the sequence for another SFM.

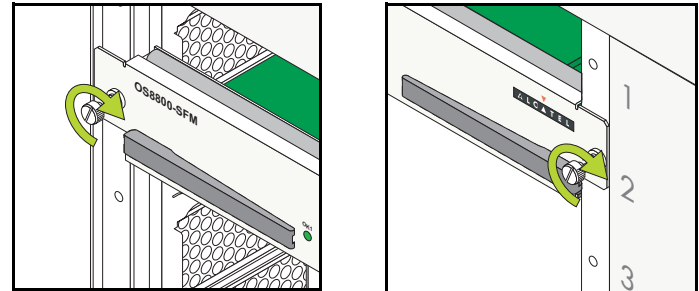
- 1** Holding the SFM in both hands, carefully slide it into the chassis card guide. The component side of the board should face up.
- 2** The SFM should slide in easily. Do not force the SFM into the slot. If any resistance is encountered, ensure the SFM is aligned properly in the card guide.



3 When the SFM is nearly seated in the slot, be sure that the two extractor levers—one on the left of the SFM and one on the right—are slightly opened (approximately 30 degrees). This allows the notch on each extractor lever to grasp the rail on the chassis. Once the notches have grasped the rail, press both extractor levers inward simultaneously until the SFM is firmly seated.



4 Once the SFM is firmly seated, secure the SFM to the chassis by tightening the two captive screws. *Be sure not to overtighten the captive screws. If you use a screwdriver, the torque used to tighten the screws must not exceed 2.3 inch pounds.*



5 Install all remaining SFMs by repeating steps 1 through 4 for each module.

Blank Cover Plates

Blank cover plates are factory-installed in the chassis and are used to cover empty CMM, SFM, and NI slots, as well as empty power supply bays.

These cover plates play an important role in chassis airflow and temperature management. They also provide protection for module processor boards and other sensitive internal switch components by closing off a chassis that is not fully populated.

Because they regulate airflow and help protect internal chassis components, blank cover plates should remain installed at empty module slots and power supply bays at all times.

Connections and Cabling

Once your switch is properly installed, you should connect all network and management cables required for your network applications. Connections may include:

- Serial cable to the console port
- Ethernet cable to the Ethernet Management Port (EMP) on the CMM
- Fiber cables to all required MiniGBICs and Xenpaks
- Ethernet cables to all required RJ-45 ports on copper ENI and GNI modules.

Serial Connection to the Console/Modem Port

The console port, located on the CMM module, provides a serial connection to the switch and is required when logging into the switch for the first time. By default, this female DB-9 connector provides a DCE console connection. However, by changing the onboard jumper setting, the port can be changed to a DTE modem connection.

Modem Connections. If you require a modem connection to the switch, you must convert the console port to support modem connections by installing a hardware jumper on the CMM. Refer to your *OmniSwitch 8800 Hardware Users Guide* for details.

Serial Connection Default Settings

The factory default settings for the serial connection are as follows:

baud rate	9600
parity	none
data bits (word size)	8
stop bits	1

For information on modifying these settings, refer to [“Modifying the Serial Connection Settings” on page 29.](#)

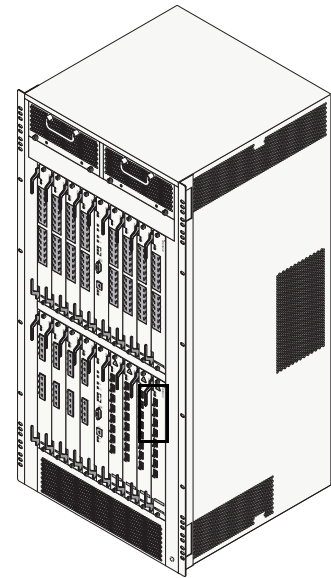
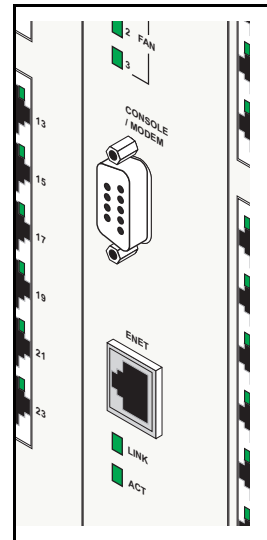
EMP Cable Requirements

There are specific cable type requirements (i.e., straight-through or crossover) based on the location of the EMP port and the type of device to which it is connecting. Refer to the information below:

EMP to a Switch	Straight-through
EMP to a Computer or Workstation	Crossover

Note. For information on manually configuring Ethernet ports for cabling requirements, refer to “Configuring Ethernet Ports” in the *OmniSwitch 7700/7800/8800 Network Configuration Guide*.

Refer to the diagram below for console/modem port and EMP locations.



Booting the Switch

Now that you have installed the switch components and connected all required cables, you can boot the switch. To boot the switch, simply turn the on/off switch for all installed power supplies to the on (|) position.

Note. If you have more than one power supply installed, be sure to turn on each power supply in rapid succession, (i.e., within a few seconds of each other). This ensures that there will be adequate power for all NI modules when they boot.

Component LEDs

The boot process takes a few moments to complete. During this process, the LEDs on the CMM, SFM, and NI modules may flash and change color, indicating different stages of the boot.

Following a successful boot, the LEDs on all switch components, including power supplies, should display as follows:

CMM OK1	Solid Green
CMM OK2	Blinking Green
CMM TEMP	Solid Green
CMM FAN 1	Solid Green

CMM FAN 2	Solid Green
CMM FAN 3	Solid Green
SFM OK1	Solid Green
SFM OK2	Blinking Green
NI OK1	Solid Green
NI OK2	Blinking Green
Power Supply TEMP Fail	Off
Power Supply DC OK	Solid Green
Power Supply AC OK	Solid Green

If the LEDs do not display as indicated, make sure the boot process is completed. Again, the boot process takes several moments to complete. If the LEDs do not display as indicated following a complete boot sequence, contact Alcatel Customer Support.

For descriptions of CMM, SFM, and NI LED states, see pages [53](#) through [63](#). For information on power supply LED states, refer to the *OmniSwitch 8800 Hardware Users Guide*.

Once the switch has completely booted and you have accessed your computer's terminal emulation software via the console port, you are ready to log in to the switch's Command Line Interface (CLI) and configure basic information. Continue to [“Your First Login Session” on page 23](#).

Your First Login Session

In order to complete the setup process for the switch, you should complete the following steps during your first login session:

- Log in to the switch
- Set IP address information for the Ethernet Management Port (EMP)
- Unlock session types
- Change the login password
- Set the date and time
- Set optional system information
- Save your changes

Important. You must be connected to the switch via the *console port* before initiating your first login session.

Logging In to the Switch

When you first log in to the switch, you will be prompted for a login (i.e., *user*) name and password. During this first login session, only one user name option and one password option is available:

- Login (i.e., user name)—**admin**
- Password—**switch**

To log in to the switch, enter **admin** at the login prompt:

```
login: admin
```

Next, enter the factory default password, **switch**, at the password prompt:

```
password: switch
```

The default welcome banner, which includes information such as the current software version and system date, displays—followed by the CLI command prompt:

```
Welcome to the Alcatel OmniSwitch 8000
Software Version 5.1.5, June 13, 2004.
Copyright(c), 1994-2004 Alcatel Internetworking, Inc.
All Rights reserved.
OmniSwitch(TM) is a trademark of Alcatel Internetwork-
ing, Inc. registered in the United States Patent and
Trademark Office.
```

More Information On User Accounts. A user account includes a login name, password, and user privileges. Privileges determine whether the user has read or write access to the switch and which commands the user is authorized to execute.

For detailed information on setting up and modifying user accounts and user privileges, refer to the “Managing Switch User Accounts” chapter of your *OmniSwitch 7700/7800/8800 Switch Management Guide*.

Setting IP Address Information for the EMP

The Ethernet Management Port (EMP) is located on the CMM module. The EMP allows you to bypass the Network Interface (NI) modules and manage the switch over the network directly through the CMM.

In order to ping the switch through the EMP Ethernet connection, you must change the port’s default IP and gateway addresses.

To change the default IP and gateway addresses, refer to the following steps.

Note. You must be connected to the switch via the console port before attempting to change IP address information. Otherwise, an error message will display.

1 Enter **modify boot parameters** at the CLI prompt. The boot prompt displays:

```
Boot >
```

2 At the boot prompt, enter **boot empipaddr**, followed by the new default IP address for the EMP. For example:

```
Boot > boot empipaddr 168.22.2.120
```

3 Next, enter **boot empgatewayipaddr**, followed by the new default gateway address for the EMP. For example:

```
Boot> boot empgatewayipaddr 168.22.2.254
```

4 Verify your current changes by entering **show** at the boot prompt:

```
Boot > show
Edit buffer contents:
EMP IP Address           : 168.22.2.120
EMP Gateway IP Address   : 168.22.2.254
```

(additional table output not shown)

Subnet Mask. The default subnet mask is Class C (255.255.255.0). If you must change this default value, use the **boot empnetmask** command at the boot prompt.

Access to the EMP. By default, only devices in the same subnet as the EMP will be able to manage the switch through that port. For information on allowing devices in other subnets to manage the switch via the EMP, refer to the *OmniSwitch 8800 Hardware Users Guide*.

5 Save these changes to the switch's running memory by entering **commit system** at the boot prompt:

```
Boot > commit system
```

This will immediately enable your changes and allow users to ping the EMP. Note, however, that these changes have not yet been saved to the switch's **boot.params** file and will be lost if the switch is rebooted.

6 To permanently save these changes to the **boot.params** file, enter **commit file** at the boot prompt:

```
Boot > commit file
```

Changes will be preserved following a switch reboot.

7 Return to the CLI prompt by entering **exit** at the boot prompt.

Important. Although you have configured the EMP with valid IP address information, you will not be able to access the switch through this port for Telnet, FTP, WebView, or SNMP sessions until you have unlocked these remote session types. See "[Unlocking Session Types](#)" for more information.

Unlocking Session Types

Security is a key feature on OmniSwitch 8800 switches. As a result, when you access the switch for the first time, you must use a *direct console port connection*. All other session types (Telnet, FTP, WebView, SNMP, etc.) are "locked out" until they are manually unlocked by the user.

The CLI command used to unlock session types is **aaa authentication**.

Note. When you unlock session types, you are granting switch access to non-local sessions (e.g., Telnet). As a result, users who know the correct user login and password will have remote access to the switch. For more information on switch security, refer to the "Managing Switch Security" chapter of your *OmniSwitch 7700/7800/8800 Switch Management Guide*.

Unlocking All Session Types

To unlock all session types, enter the following command syntax at the CLI prompt:

```
-> aaa authentication default local
```

Unlocking Specified Session Types

You can also unlock session types on a one-by-one basis. For example, to unlock Telnet sessions only, enter the following command:

```
-> aaa authentication telnet local
```

To unlock WebView (HTTP) sessions only, enter the following command:

```
-> aaa authentication http local
```

You cannot specify more than one session type in a single command line. However, you can still unlock multiple session types by using the **aaa authentication** command in succession. For example:

```
-> aaa authentication http local
-> aaa authentication telnet local
-> aaa authentication ftp local
```

How many sessions are allowed?

Once a session type has been unlocked, the following number of sessions is allowed for each type:

Telnet sessions allowed	4 concurrent sessions
FTP sessions allowed	4 concurrent sessions
HTTP (Web browser) sessions allowed	4 concurrent sessions
Secure Shell and Secure Shell FTP sessions allowed	8 concurrent sessions
Total sessions (Telnet, FTP, HTTP, Secure Shell and Secure Shell FTP, console)	21 concurrent sessions
SNMP sessions allowed	50 concurrent sessions

Changing the Login Password

Change the login password for **admin** user sessions by following the steps below:

- 1 Be sure that you have logged into the switch as user type **admin** (see “[Logging In to the Switch](#)” on page 23).
- 2 Enter the keyword **password** and press <Enter>.
- 3 Enter your new password (up to 47 characters long) at the prompt (refer to the note below).

Note. Typically, the password should be a string of non-repeating characters. The CLI uses the first occurrence of the character series to uniquely identify the password. For example, the password *engrengr* is the same as *enrg*. A better password might be *enrg2735*.

- 4 You will be prompted to re-enter the password. Enter the password a second time.

Note. Be sure to remember or securely record all new passwords; overriding configured passwords on OmniSwitch 8800 switches is restricted.

New password settings are automatically saved in real time to the local user database; the user is not required to enter an additional command in order to save the password information. Also note that new password information is retained following a reboot.

All subsequent login sessions—including those through the console port—will require the new password in order to access the switch.

User Accounts. The switch allows a maximum of 50 user accounts in the local user database. For information on creating additional user types and assigning individual passwords, refer to the “Managing Switch User Accounts” chapter of your *Switch Management Guide*.

Setting the System Time Zone

The switch’s default time zone is UTC (also referred to as Greenwich Mean Time).

If you require a time zone that is specific to your region—or if you need to enable Daylight Savings Time (DST) on the switch—you can configure these settings via the **system time-zone** and **system daylight savings time** commands. For example, to set the system clock to run on Pacific standard time, enter the following command.

```
-> system timezone pst
```

To enable Daylight Savings time, enter the following command.

```
-> system daylight savings time enable
```

Many other time zone variables are supported. For detailed information on configuring a time zone for the switch, refer to your *OmniSwitch 7700/7800/8800 Switch Management Guide*.

Setting the Date and Time

Set the current time for the switch by entering **system time**, followed by the current time in *hh:mm:ss*. For example:

```
-> system time 18:35:00
```

The switch uses a 24-hour clock; the time value shown in the above example would set the time to 6:35 PM.

To set the current date for the switch, enter **system date**, followed by the current date in *mm/dd/yyyy*. For example:

```
-> system date 12/27/2002
```

Setting Optional System Information

This section provides information on configuring optional system parameters, including:

- the switch's administrative contact
- a system name
- the switch's physical location

Specifying an Administrative Contact

An administrative contact is the person or department in charge of the switch. If a contact is specified, users can easily find the appropriate network administrator if they have questions or comments about the switch.

To specify an administrative contact, enter **system contact**, followed by a text string of up to 254 characters. If you include spaces between words in the text string, be sure to enclose the string in quotes (" ").

For example:

```
-> system contact "JSmith X477 js@company.com"
```

Specifying a System Name

The system name is a simple, user-defined text description for the switch.

To specify a system name, enter **system name**, followed by a text description of up to 254 characters. If you include spaces between words in the text string, be sure to enclose the string in quotes (" ").

For example:

```
-> system name "Engineering Switch 3"
```

Specifying the Switch's Location

It is recommended that you use a physical labeling system for locating and identifying your switch(es). Examples include placing a sticker or placard with a unique identifier (e.g., the switch's default IP address) on each chassis.

However, if no labeling system has been implemented *or* you need to determine a switch's location from a remote site, entering a system location can be very useful.

To specify a system location, enter **system location**, followed by a text description of up to 254 characters. If you include spaces between words in the text string, be sure to enclose the string in quotes (" ").

For example:

```
-> system location "NMS Lab--NE Corner Rack"
```

Viewing Your Changes

To view your current changes, enter **show system** at the CLI prompt.

Saving Your Changes

Once you have configured this basic switch information, save your changes by entering **write memory** at the CLI command prompt.

When the **write memory** command is entered, changes are automatically saved to the main configuration file (**boot.cfg**) and placed in the **/flash/working** directory. For more information on the **boot.cfg** file, refer to [page 38](#).

Note. If the switch reboots following a **write memory** command entry, the switch will run from the **/flash/certified** directory. As a result, subsequent configuration changes cannot be saved using the **write memory** command until the switch is once again running from the **/flash/working** directory. See [page 40](#) for important information on these directories.

Modifying the Serial Connection Settings

The switch's serial connection defaults are listed on [page 20](#). If you wish to modify the default serial connection settings (i.e., baud rate, parity, data bits, and stop bits), refer to the following steps.

Note. You must be connected to the switch via the console port before attempting to change serial connection settings. Otherwise, an error message will display.

1 Enter **modify boot parameters** at the CLI prompt. The boot prompt displays:

```
Boot >
```

2 To change the baud rate, enter **boot serialbaudrate**, followed by the desired baud rate value. Options include 1200, 2400, 4800, 9600 (default), 19200, 38400, 57600, 76800, and 115200. For example:

```
Boot > boot serialbaudrate 19200
```

Note. Setting the console port to speeds above 9600 baud can cause problems with Zmodem uploads.

3 To change the parity value, enter **boot serialparity**, followed by the desired parity value. Options include none (default), even, and odd. For example:

```
Boot > boot serialparity even
```

- 4** To change the data bits (i.e., word size) value, enter **boot serialwordsize**, followed by the number of data bits. Options include 7 and 8 (default). For example:

```
Boot > boot serialwordsize 7
```

- 5** To change the stop bits value, enter **boot serialstopbits**, followed by the number of stop bits. Options include 1 (default) and 2. For example:

```
Boot > boot serialstopbits 2
```

- 6** Verify your current changes by entering **show** at the boot prompt:

```
Boot > show
Edit buffer contents:
Serial (console) baud           : 19200
Serial (console) parity         : even
Serial (console) stopbits       : 2
Serial (console) wordsize       : 7
```

(additional table output not shown)

- 7** You can save your changes to the **boot.params** file by entering **commit file** at the boot prompt:

```
Boot > commit file
```

When the **commit file** command is used, changes will not be enabled until after the next switch reboot.

- 8** You can also save your changes in real time to the switch's running memory by entering **commit system** at the boot prompt:

```
Boot > commit system
```

Caution. There are two important things to consider when using the **commit system** command to save serial connection changes:

- Output to the terminal may become illegible due to incompatible serial connection settings between the switch and the terminal emulation software.
- If you use the **commit system** command only, changes will *not* be saved to the switch's **boot.params** file and will be lost if the switch is rebooted. To save changes to the **boot.params** file, refer to step 7.

-
- 9** Return to the CLI prompt by entering **exit** at the boot prompt.

This completes the initial setup process. Your Alcatel OmniSwitch 8800 switch is now ready for additional configuration and network operation. Refer to the following sections for more information on using your switch, as well as additional built-in features.

CLI Basics

The Command Line Interface (CLI) allows you to configure and monitor your switch by entering single-line commands. The CLI can be accessed through terminal or Telnet sessions.

Note. Configuring the switch using the CLI is also referred to as “online configuration.”

The following section provides basic information on CLI assistance features. For detailed information on the CLI, including syntax conventions, usage rules, command documentation, and a quick reference card, refer to the *OmniSwitch CLI Reference Guide* and the *OmniSwitch 7700/7800/8800 Switch Management Guide*.

CLI Assistance Features

The CLI provides built-in features that assist you while entering commands. These features include:

- Syntax checking
- Command line help
- Partial keyword completion
- Deleting and inserting characters
- Previous command recall
- Prefix recognition
- Prefix prompt
- Command history

Note. The software supports vt100 terminal emulation; CLI assistance features may be limited if your terminal emulation software is using a setting other than vt100.

Syntax Checking

If you make a mistake while entering command syntax, the CLI provides clues about how to correct the error. Whenever a command error is entered, two indicators are displayed:

- An Error message describing the type of error.
- A carat (^) character indicating where the error occurred.

For example, the syntax

```
-> show vlan router port mac status
```

results in the following error:

```
-> show vlan router port mac status
                        ^
ERROR: Invalid entry: "port"
```

Because **port** is not valid syntax for the command, the error message shows it as an invalid entry and the carat indicates where the problem has occurred. For this example, the valid command syntax is

```
-> show vlan router mac status
```

Command Line (?) Help

The CLI provides additional help in the form of the question mark (?) character. The ? character provides information that helps you build your command syntax. For example, if you enter

```
-> show vlan router
```

at the command line and are unsure of the next keyword, you can enter the ? character for additional options (be sure to include a space between the last keyword and the ? character):

```
-> show vlan router ?  
      ^  
  
      MAC IP  
(Vlan Manager Command Set)
```

The carat character (^) indicates the point where you invoked the command line help. Possible keyword options, along with the corresponding command set, are displayed. Here, you can continue building the command by entering either **mac** or **ip**.

Some command completion options may indicate user-defined information. For example: <**string**>, <**slot/port**>, <**hh:mm:ss**>, etc. The option <**cr**> indicates that the command can be completed by pressing <**Enter**>.

Note. The ? character can be entered at any time. In addition, you can type the ? character alone at the CLI prompt to display root keywords for *all* command sets.

Partial Keyword Completion

The CLI has a partial keyword recognition feature. Instead of typing an entire keyword, you can type only the minimum number of characters needed to uniquely identify the keyword, then press the **Tab** key. The CLI will complete the keyword and place the cursor at the end of the command line.

If you do not enter enough characters to uniquely identify the keyword, pressing the **Tab** key will have no effect.

If you enter characters that do not belong to an applicable keyword, pressing the **Tab** key will remove the characters and place the cursor back to its previous position.

Deleting Characters

You can delete CLI command characters by using the **Backspace** key or the **Delete** key. The **Backspace** key deletes each character in the line, one at a time, from right to left.

To change incorrect syntax with the **Delete** key, use the **Left Arrow** key to move the cursor to the left of the character to be deleted, then use the **Delete** key to remove characters to the right of the cursor.

Inserting Characters

To insert a character between characters that are already typed, use the **Left** and **Right Arrow** keys to place the cursor into position, then type the new character. Once the syntax is correct, execute the command by pressing **<Enter>**. In the following example, the user enters the wrong syntax to execute a command. The result is an error message.

```
-> show micrcode
      ^
ERROR: Invalid entry: "micrcode"
```

To correct the syntax without retyping the entire command line, use the **!!** command to recall the previous syntax. Then, use the **Left Arrow** key to position the cursor between the “r” and the “c” characters. To insert the missing character for this example, type “o” as shown:

```
-> !!
-> show microcode
```

Previous Command Recall

To recall the last command executed by the switch, press the **Up Arrow** key at the prompt and the previous command will display on your screen. You can execute the command again by pressing **<Enter>** or you can edit it first by deleting or inserting characters.

Prefix Recognition

Prefix recognition is a CLI feature that reduces redundant command line entry by storing commonly-used prefix information for certain commands. The CLI assumes this stored prefix information when the next command is entered. For example, if you enter

```
-> vlan 32
```

at the command line, the CLI will store the **vlan 32** prefix information. If you want to create a router port on VLAN 32, you can simply enter

```
-> router ip 1.1.1.1
```

instead of the full command:

```
-> vlan 32 router ip 1.1.1.1
```

The following command families support prefix recognition:

- AAA
- Interface
- Link Aggregation
- Quality of Service (QoS)
- Spanning Tree
- VLAN Management

Prefix Prompt

You can set the CLI to display the current command prefix *as the command prompt* by entering the following command:

```
-> prompt prefix
```

After entering this command, your command prompt will include current stored prefix information until a new prompt is specified. For example, the following is a prompt for a user who has begun configuring VLAN 32:

```
-> vlan 32
```

To set the prompt back to the default arrow (`->`), enter the following syntax, exactly as shown, at the prefix prompt:

```
prompt string ->
```

Command History

You can view a list of up to 30 of the most recently executed commands via the **show history** command. For example:

```
-> show history
1 aaa authentication default local
2 password
3 system timezone pst
4 system daylight savings time enable
5 system time 14:58:00
6 system date 11/06/2002
7 system contact "JSmith js@company.com"
8 system name EngSwitch3
9 system location "NMS Lab--NE Rack"
10 show system
```

```
11 modify boot parameters
12 show history
```

Note that the most recent commands are displayed *lower* in the list. For this reason, the **show history** command will always be listed last.

You can recall commands from the history list by entering an exclamation point (`!`). For example:

```
-> !4
-> show temperature
```

The CLI prints the fourth command from the history list (in this case, **show temperature**) at the CLI prompt.

You can also recall the *last* command in the history list by entering two exclamation points (`!!`). For example:

```
-> !!
-> show history
```

To specify the number of commands displayed in the history list (1 - 30), use the **history size** command. For example:

```
-> history size 10
```

To view the current history list settings, use the **show history parameters** command. For example:

```
-> show history parameters
History size: 30
CurrentSize: 10
Index Range: 1-10
```


Command Logging

OmniSwitch 8800 switches provide command logging. This feature allows users to record up to 100 of the most recent commands entered via Telnet and console sessions. In addition to a list of commands entered, the results of each command entry are recorded. Results include information such as whether a command was executed successfully, or whether a syntax or configuration error occurred.

Note. The **command history** feature differs from the **command logging** feature in that command history buffers up to 30 of the most recent commands. The command information is *not* written to a separate log file. Also, the command history feature includes only general keyword syntax (i.e., it does not record full syntax, date and time, session IP address, and entry results). For more information on command history, refer to [page 34](#).

Refer to the sections below for more information on configuring and using CLI command logging. For detailed information related to command logging commands, refer to the *OmniSwitch CLI Reference Guide*.

Enabling Command Logging

By default, command logging is *disabled*. To enable command logging on the switch, enter the following command:

```
-> command-log enable
```

When command logging is enabled via the **command-log enable** syntax, a file called **command.log** is automatically created in the switch's **/flash** directory. Once enabled, configuration commands entered on the command line will be recorded to this file until command logging is disabled.

The **command.log** file has a 66402 byte capacity. This capacity allows up to 100 of the most recent commands to be recorded. Because all CLI command logging information is archived to the **command.log** file, command history information will be lost if the file is deleted.

Note. The **command.log** file cannot be deleted while the command logging feature is enabled. Before attempting to remove the file, be sure to disable command logging.

For detailed information on command logging, refer to the *OmniSwitch 7700/7800/8800 Switch Management Guide*.

Common CLI Commands

The following table lists some basic CLI commands that will help you get acquainted with the CLI interface. Enter each command exactly as shown. For complete descriptions of these commands, refer to your *OmniSwitch CLI Reference Guide*.

write memory	Saves current configuration changes to the /flash/working directory's boot.cfg file. For more information, refer to page 38 .
show running-directory	Displays the current running directory. For more information, refer to page 40 .
vlan	Creates a new VLAN.
show vlan	Displays a list of VLANs configured on the switch.
vlan router ip	Defines a virtual router port to enable IP routing on a VLAN.
show chassis	Displays basic configuration and status information for the switch chassis.
show module	Displays basic information for all modules installed in the chassis. Modules include primary and secondary CMMs and Network Interface (NI) modules.
show ni	Displays basic hardware and status information for NI modules installed in the switch.

show cmm	Displays basic hardware and status information for CMM modules in the chassis.
show fabric	Displays the status and configuration of Switch Fabric Modules (SFMs).
show system	Displays basic information about the switch.
show microcode	Displays the version of software currently installed on the switch.
exit	Ends the current Telnet or console session.
session timeout	Modifies the amount of time before Telnet and console sessions will time out.

Offline Configuring

You can configure OmniSwitch 8800 switches using an ASCII-based text file. This is referred to as *offline configuring*. With offline configuring, CLI commands may be typed into a text document (referred to as a *text-based configuration file*) and then uploaded and applied to the switch.

An ASCII-based configuration file can be viewed or edited at any time using a standard text editor (e.g., WordPad). The switch also offers its own text editing buffer, so a file can be edited in the flash file directory without having to be downloaded to a workstation.

Because they are portable, stand-alone documents, configuration files allow users to easily clone switch configurations. Moreover, the ability to store a broad range of network information in a single text file facilitates troubleshooting, testing, and overall network readability.

Syntax Checking

Offline configuration includes a syntax check feature. This function will report syntax errors or typos that might cause a command to be rejected by the switch when a configuration file is applied.

Scheduling a Configuration File to be Applied at a Later Time

You can apply a file to the switch immediately, or you can schedule a file to be applied either at a specific date and time or after a specific amount of time has passed. Timer sessions can greatly facilitate maintenance tasks such as synchronized batch updates.

Generating Snapshots of the Current Configuration

A generated snapshot captures the switch's current configuration settings in a single text file. Captured configuration settings can then be viewed or edited offline at any time. Troubleshooting is greatly facilitated, as aggregate network information can be read at a glance.

Snapshot files can be used as configuration files for a single switch or for multiple switches. This allows easy cloning of switch configurations for networks requiring multiple, similarly-configured switches. Simply place the snapshot file in the appropriate directory of the switch(es) you want to configure and use the CLI to apply the file.

For detailed information on offline configuring and the features described above, refer to the “Working with Configuration Files” chapter in the *OmniSwitch 7700/7800/8800 Switch Management Guide*.

Files and Directories

Boot and Image Files

Although the switch's flash memory can contain many file types (e.g., log and snapshot files), there are three specific file types that provide key switch and network functions. These files include the **boot.cfg** file, the **boot.params** file, and image (.img) files.

boot.params File

The **boot.params** file provides IP address, gateway, and mask information for the switch's Ethernet Management Port (EMP). This information is required for direct Ethernet connections to the switch's primary CMM.

This file also contains default console port parameters (baud rate, etc.) and can be modified via the **modify boot parameters** CLI command.

In order to be read by the switch, the **boot.params** file must be placed in the **/flash** directory. If the file is deleted for any reason, a new **boot.params** file will be automatically generated on the next system boot. However, all user-configured information, such as IP address, gateway, and mask information, will be lost. Therefore, it is recommended that you keep a backup copy of this file at all times.

boot.cfg File

The **boot.cfg** file stores your network configuration parameters. When you first boot the switch, no **boot.cfg** file is present. This file is automatically generated when you first issue a **write memory** command to save your configuration changes. The file is then automatically placed in the **/flash/working** directory.

Important. Your switch must be running from the **/flash/working** directory in order to save changes to the **boot.cfg** file. Refer to [“Working and Certified Directories” on page 40](#) for more information.

Once the configuration parameters stored in the **boot.cfg** file are considered tested and reliable, the file can be copied to the **/flash/certified** directory and become part of the “last known good” software for the switch.

If all copies of this file are deleted and a system boot occurs, your network configuration will be lost. Therefore, it is recommended that you keep a backup copy of this file at all times.

Image Files

Image files (those files with **.img** extensions) contain executable code that provides support for the system, NI modules, and network functions. In other words, they serve as essential drivers for switch and network operations.

Although these files may be backed up to the root flash directory or any user-defined subdirectory, they must be present in the **/flash/working** and **/flash/certified** directories for the switch to operate and pass traffic.

If you delete all copies of an image file, you will be required to contact Alcatel Customer Support for replacements. Therefore, it is recommended that you keep backup copies on your computer's hard drive or a locally-accessible server.

For a complete list of OmniSwitch 8800 image files, along with their functions, refer to the table below.

Eos.img	Contains the OmniSwitch 8800 operating system software.
Ebase.img	Contains base code for the switch.
Erelease.img	Contains release number information for the system software package.
El2eth.img	Provides support for Layer 2 switching functions.
Erout.img	Provides support for Layer 3 routing functions.
Eqos.img	Provides Quality of Service (QoS) functionality.

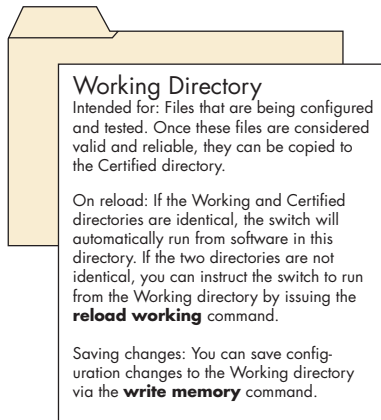
Eeni.img	Provides support for 10/100, Fast Ethernet, and Gigabit Ethernet.
Ediag.img	Provides enhanced hardware diagnostics for the switch.
Eadvrout.img	Alcatel's Advanced Routing software package.
Esecu.img	Provides enhanced security features for the switch (e.g., Authenticated VLANs (AVLANs)).
Eweb.img	Provides support for the WebView software application.
Ewebl2eth.img	Provides WebView configuration of Layer 2 features.
Ewebrouit.img	Provides WebView configuration of basic routing features.
Ewebqos.img	Provides WebView configuration of Quality of Service (QoS) features.
Ewebadvrout.img	Enables WebView configuration of Alcatel's Advanced Routing.
Ewebsecu.img	Provides WebView configuration of enhanced security features for the switch.

Working and Certified Directories

OmniSwitch 8800 switches are shipped with 32 MB of flash memory. This memory is used to store files, including boot and image files, that are used for switch operations.

The **/flash** directory contains two subdirectories: **/working** and **/certified**. These directories work together to provide the *image rollback* resiliency feature. Image rollback allows the switch to return to a prior “last known good” version of software in the event of a system software problem.

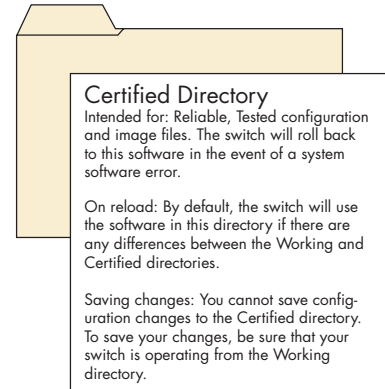
Working Directory



The **/flash/working** directory is intended for software that is still being configured for your network. Changes made while configuring your switch are saved to the **boot.cfg** file in the **/flash/working** directory.

Once the **/flash/working** directory’s configuration and image files are road-tested and considered valid and reliable for your network, they can be copied to the **/flash/certified** directory.

Certified Directory



The software in the **/flash/certified** directory should be treated as the “gold master” for the switch. When you place configuration and image files in this directory, you are “certifying” them as tested and reliable. If the switch is running from the **/flash/working** directory and experiences a software problem, it will “roll back” to the last known good software in the **/flash/certified** directory on the next reboot.

How can I tell which directory the switch is currently using?

When you first boot the switch, the **/flash/working** directory is used; this allows you to save your initial configuration changes to the **boot.cfg** file. However, subsequent boots may result in your switch running from the **/flash/certified** directory. Therefore, verifying the current running directory is a key step any time you are configuring or monitoring the switch.

View the current directory by entering the **show running-directory** command. For example:

```
-> show running-directory
Current running CMM           : PRIMARY,
Current running configuration : WORKING
Certify/Restore Status       : CERTIFIED,
Synchronization Status       : SYNCHRONIZED
```

In this example, the switch is using the **/flash/working** directory.

Can I save changes to the Certified directory?

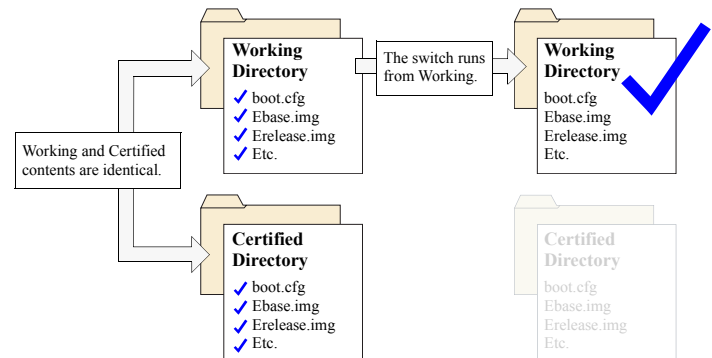
No. The **/flash/certified** directory is intended to store only tested, reliable configuration and image files. Configuration changes must be saved to the **boot.cfg** file in the **/flash/working** directory. Once those changes have been road-tested, the contents of the **/flash/working** directory can be copied to the **/flash/certified** directory via the **copy working certified** command.

What happens when the switch boots?

During the boot process, the switch compares the contents of the **/flash/working** and **/flash/certified** directories. Based on this comparison, the switch determines which directory to use as its running software.

Working and Certified Are Identical

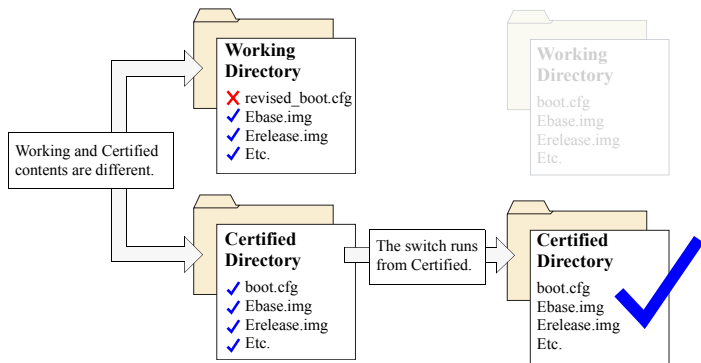
If the software in the **/flash/working** and **/flash/certified** directories are completely identical, the switch considers the software in both directories to be equally reliable. In this case, the switch will run from the **/flash/working** directory.



When the switch is running from the **/flash/working** directory software, configuration changes can be saved via the **write memory** command.

Working and Certified Are Different

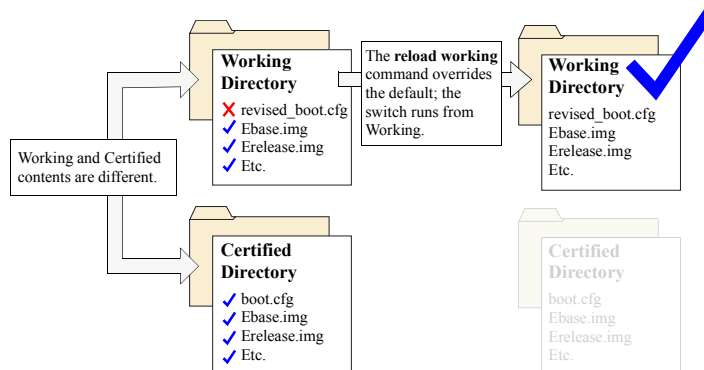
If the software in the `/flash/working` directory differs *even slightly* from the software in the `/flash/certified` directory, the switch will automatically run from the `/flash/certified` directory



When the switch runs from the `/flash/certified` directory, configuration changes *cannot* be saved via the **write memory** command

My Working and Certified directories are different. Can I force a reboot from the Working directory?

Yes. If its configuration and image files are known to be reliable, you can override the default and initiate a reboot from the `/flash/working` directory. This is done via the **reload working** command. For more information, refer to your *OmniSwitch CLI Reference Guide*.



Note. For detailed information on using directories, refer to the “Managing CMM Directory Content” chapter in the *OmniSwitch 7700/7800/8800 Switch Management Guide*.

Loading Software

The following section describes the procedure for loading new release software to your switch. Note that the procedure varies slightly for non-redundant (single CMM) and redundant (dual CMM) configurations. Follow the steps that apply to your system.

Note. For detailed information on loading software and working with directories in both non-redundant and redundant CMM configurations, refer to the “Managing CMM Directory Content” chapter in the *OmniSwitch 7700/7800/8800 Switch Management Guide*.

Non-Redundant Configurations

1 Verify that all required image files from the new software release are located on your computer’s hard drive or a *locally-accessible* server.

2 Establish an FTP session to the switch, then access the `/flash/working` directory.

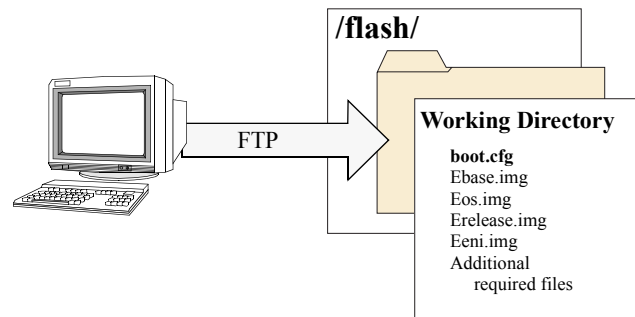
Note. Before attempting to establish an FTP session, be sure that you have first unlocked the FTP session type via the **aaa authentication** command. Otherwise, an FTP login error will occur. See “[Unlocking Session Types](#)” on [page 25](#) for more information.

3 Using your FTP client or the CLI’s **rm** command, delete all **.img** files from the `/flash/working` directory. You can use the asterisk (*) wildcard to delete all **.img** files at once. For example:

```
-> rm working/*.img
```

Important. Do not delete the **boot.cfg** file. Otherwise, any configuration changes you have saved will be lost. Also, do not delete files from the `/flash/certified` directory.

4 Using your FTP client, upload all required **.img** files from the new software release to the `/flash/working` directory.



5 Use the **install** command after the software files have been transferred to the switch via FTP. For example:

```
-> install /flash/working/*.img
```

Note. For more information on the **install** command, refer to the *OmniSwitch 7700/7800/8800 Switch Management Guide* or the *OmniSwitch CLI Reference Guide*.

6 Reload the switch from the **/flash/working** directory. To do this, enter

```
-> reload working no rollback-timeout
```

at the CLI prompt.

Note. This reload process will take a few moments to complete.

Following the reload, the switch will come up running from the **/flash/working** directory (i.e., the new release software) until the next system reboot. Meanwhile, the software in the **/flash/certified** directory remains unchanged and available as a last known good version if an error should occur with the new software.

Once the release software is considered valid and reliable with your network configuration, the contents of the **/flash/working** directory can be copied to the **/flash/certified** directory via the **copy working certified** command.

Redundant Configurations

1 Verify that the OK1 LED is solid green and the OK2 LED is flashing green on both the primary and secondary CMM modules.

2 Next, verify that all required image files from the new software release are located on your computer's hard drive or a *locally-accessible* server.

3 Establish an FTP session to the switch, then access the **/flash/working** directory.

Note. Before attempting to establish an FTP session, be sure that you have first unlocked the FTP session type via the **aaa authentication** command. Otherwise, an FTP login error will occur. See “[Unlocking Session Types](#)” on [page 25](#) for more information.

4 Using your FTP client or the CLI's **rm** command, delete all **.img** files from the **/flash/working** directory on the *primary* CMM. (To determine whether you are logged into the primary CMM, use the **show running-directory** command.) You can use the asterisk (*) wildcard to delete all **.img** files at once. For example:

```
-> rm working/*.img
```

Important. Do not delete the **boot.cfg** file. Otherwise, any configuration changes you have saved will be lost. Also, do not delete files from the **/flash/certified** directory.

5 Using your FTP client, upload all required **.img** files from the new software release to the primary CMM's **/flash/working** directory.

6 Use the **install** command after the software files have been transferred to the switch via FTP. For example:

```
-> install /flash/working/*.img
```

Note. For more information on the **install** command, refer to the *OmniSwitch 7700/7800/8800 Switch Management Guide* or the *OmniSwitch CLI Reference Guide*.

7 Reload the switch from the **/flash/working** directory. To do this, enter

```
-> reload working no rollback-timeout
```

at the CLI prompt.

Note. This reload process will take a few moments to complete.

During this reload, the secondary CMM takes over the primary role and the switch runs from the **/flash/working** directory (i.e., the new release software) until the next system reboot. Meanwhile, the software in the **/flash/certified** directory remains unchanged and available as a last known good version if an error should occur with the new software.

Once the release software is considered valid and reliable with your network configuration, the contents of the **/flash/working** directory can be copied to the **/flash/certified** directory of each CMM by entering the following command:

```
-> copy working certified flash-synchro
```

This command provides two functions. It copies all contents from **/flash/working** to the **/flash/certified** directory on the primary CMM, *and* it copies all directory contents from the primary CMM to the secondary CMM and synchronizes the two modules. This helps to ensure effective CMM redundancy.

Note. The process initialized by the **copy working certified flash-synchro** command will take a few moments to complete.

Using WebView

The switch can be configured and monitored using WebView, Alcatel's Web-based device management tool. WebView software is pre-installed in the switch; you are not required to load additional software.

Note. Although WebView software is pre-installed, you must first enable HTTP sessions for your switch before you can log in. Refer to [“Unlocking Session Types” on page 25](#) for more information.

Browser Compatibility

WebView has been tested on the following Web browsers:

- Internet Explorer 5.5 for Windows 2000, Windows NT
- Internet Explorer 6.0 for Windows 2000, Windows NT, Windows XP
- Netscape 4.79 for Windows 2000, Windows NT, Solaris 2.8, HP-UX 11.0
- Netscape 7.0 for Windows 2000, Windows NT, Solaris 2.8

Required Image Files

In order to access WebView, the following image files must be present in the current running directory:

- Eweb.img
- Eweb12eth.img
- Ewebroun.img
- Ewebqos.img
- Ewebadvrout.img
- Ewebsecu.img

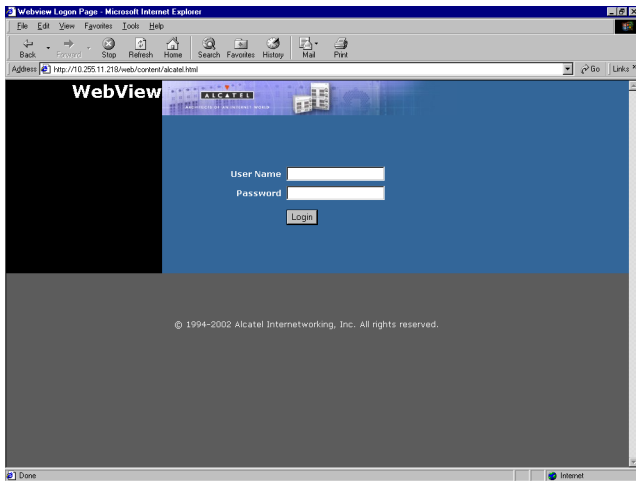
Refer to [“Image Files” on page 39](#) for more information.

Logging In to WebView

Note. Before attempting to establish a WebView session, be sure that you have first unlocked the HTTP session type via the **aaa authentication** command. Otherwise, a login error will occur. See “[Unlocking Session Types](#)” on [page 25](#) for more information.

To access WebView and log in to a switch:

- 1 Open any Alcatel-tested Web browser (see [page 46](#)).
- 2 Enter the switch’s IP address in the browser’s “Address” text field (“Location:” for Netscape users). The login screen displays:

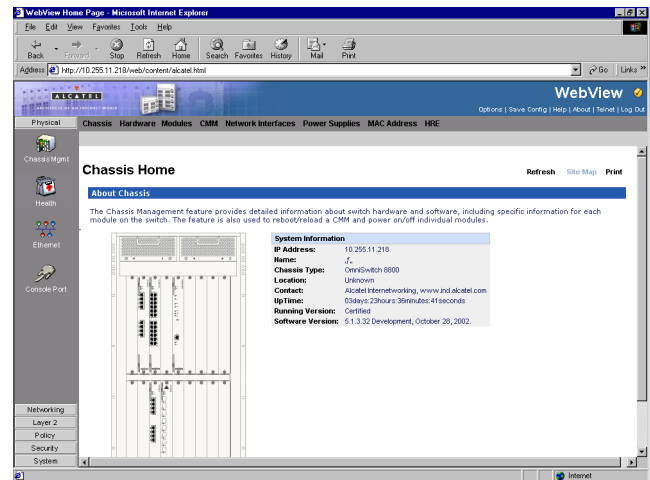


- 3 Enter the user name and password at the login prompt.

Remember, if you have already changed the user name and password for your switch, be sure to use the new information. If you have not changed your user name or password, the factory defaults are **admin** and **switch**, respectively. Refer to the “Managing Switch User Accounts” chapter of your *OmniSwitch 7700/7800/8800 Switch Management Guide* for information on modifying the default user name and password.

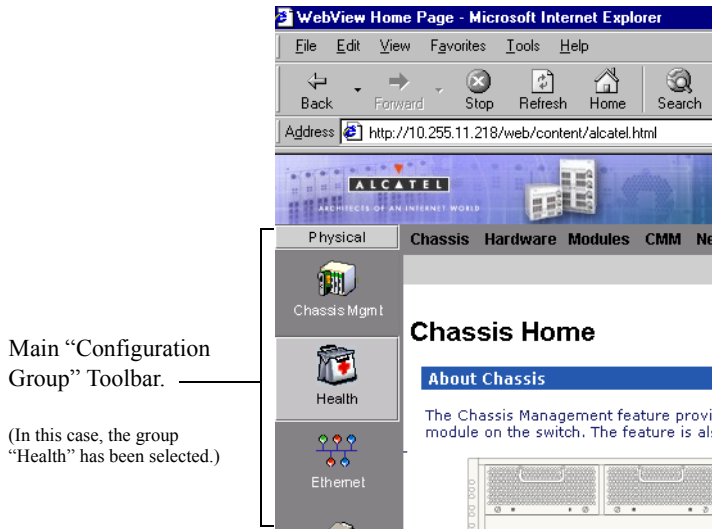
Navigating WebView

After you have successfully logged in, the Chassis Management home page displays:

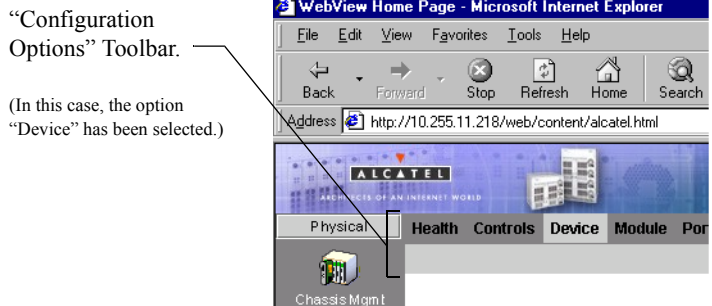


The Chassis Management home page provides a physical representation of the switch, as well as basic system information. This is the main launching point for WebView.

Navigate the application by clicking on the “Configuration Group” buttons in the left-hand toolbar



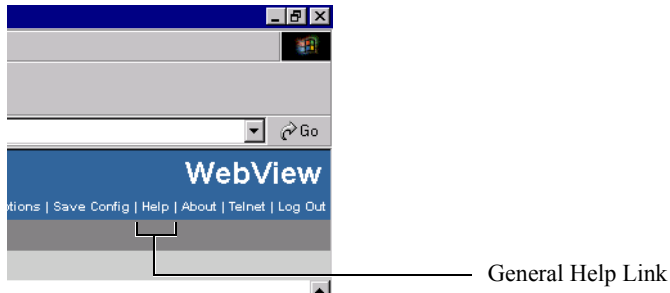
Refine your navigation by selecting “Configuration Options” for each group from the items displayed in the grey, horizontal navigation bar:



Site Maps. WebView also provides site maps for each configuration group. Site maps allow you to view complete page contents under each feature. By providing quick, easy access to specific pages, site maps can reduce time spent searching through the WebView application. To access site maps, click the “Site Map” link included on each configuration group Home page, (e.g., Health).

Online Help

General online help is available through the main Help link located in the top WebView banner:



Detailed, context-based help is provided for each status table and configuration dialog window:

VLAN Administration

<input type="checkbox"/>	VLAN	Description	Admin Status	Operational Status	STP Status	Authentication
<input type="checkbox"/>	1	VLAN 1	Enabled	Active	Enabled	Disabled

[Expanded View]

Buttons: Add, Modify, Delete, Refresh, Help

Context-specific Help button.

(In this case, for the VLAN Administration table.)

Additional Information

For more information on using WebView, refer to “Using WebView” in the *OmniSwitch 7700/7800/8800 Switch Management Guide*.

Troubleshooting

The WebView login screen does not display.

This suggests either a physical or network connection issue. Try the following options:

- Be sure that you have a good physical Ethernet cable connection to the Ethernet port used for managing the switch (EMP or NI port).
- Be sure your computer has a valid Ethernet connection and IP address. See [page 24](#) for information on configuring the IP address for the EMP.
- Verify that all required WebView image files are installed in the current running directory. See [page 46](#) for more information.

The login screen displays, but my login attempt fails.

This suggests either a user name and password or Authenticated Switch Access error. Try the following options:

- Check that you are using the correct user name and password. If you have already changed the user name and password for your switch, be sure to use the new information. If you have not changed the user name and password, the factory defaults are **admin** and **switch**, respectively.
- Be sure that you have “unlocked” HTTP sessions on the switch. To unlock HTTP sessions, enter the following command:

```
-> aaa authentication http local
```

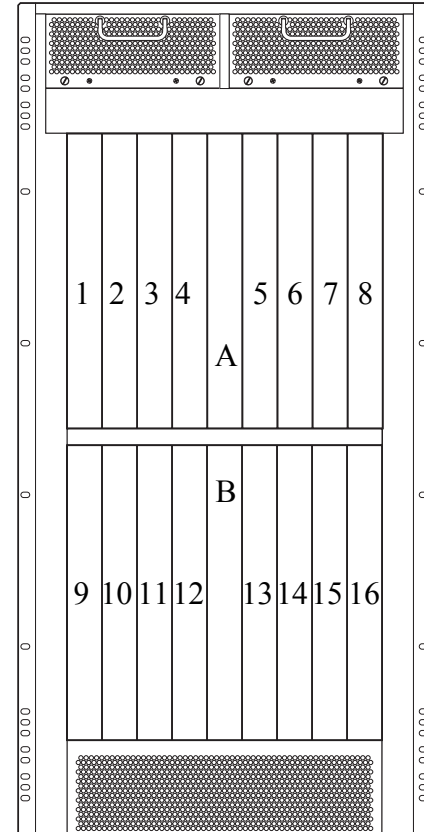
See [page 25](#) for information on unlocking session types.

Hardware Basics

Chassis Slot Numbering

The term “slot” refers to the position at which a module is installed in the chassis. On the front side of the chassis, CMM slot positions are designated as Slot A and Slot B. NI slot numbers range from 1 to 16.

On the back side of the chassis SFM slots are numbered 1 through 5, from top to bottom. Power supply bays are also given specific slot numbers. Slot numbers are designated PS-1 through PS-4, from left to right.

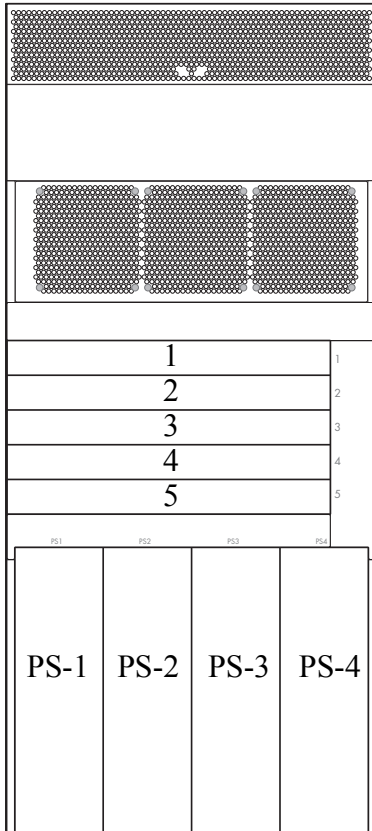


OmniSwitch 8800 Front Slot Numbering

Chassis Management Module (CMM)

The Chassis Management Module (CMM) is the management unit for OmniSwitch 8800 switches. In its role as the management unit, the CMM provides key system services, including:

- Console, modem, and Ethernet management port connections to the switch
- Software and configuration management, including the Command Line Interface (CLI)
- Web-based management (WebView)
- SNMP management
- Power management
- Temperature management
- Switch diagnostics
- Important availability features, including redundancy (when used in conjunction with another CMM) and image rollback.



OmniSwitch 8800 Back Slot Numbering

CMM Redundancy

CMM redundancy is an important resiliency feature. For CMM redundancy, two fully-operational CMM modules must be installed in the chassis at all times.

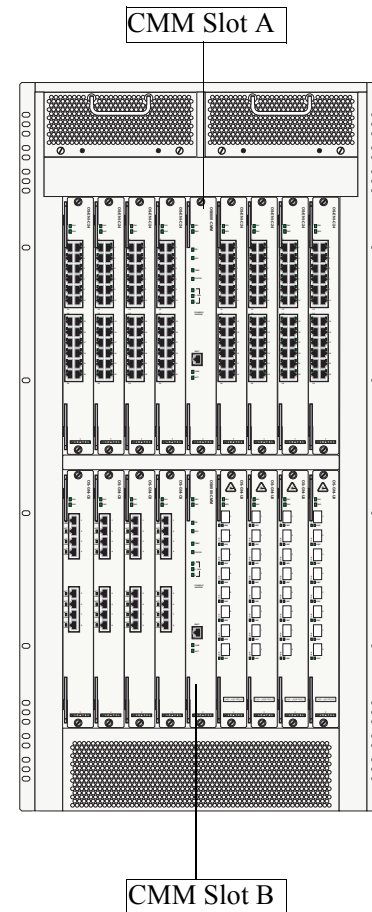
When two CMMs are running in the switch, one CMM has the primary role and one CMM has the secondary role at any given time. The primary CMM manages the current switch operations while the secondary CMM provides backup (also referred to as “failover”).

Note. By default, the CMM in slot A automatically assumes the primary role. Refer to pages [50](#) or [52](#) for CMM slot A and B positions.

If the primary CMM fails or goes offline for any reason, the secondary CMM is notified. The secondary CMM then automatically assumes the primary role.

For important information on CMM redundancy, refer to your *OmniSwitch 8800 Hardware Users Guide*.

CMM Slot Locations



CMM Front Panel

Module Status LEDs

OK1. Hardware Status. Displays solid green when powered on and the CMM has passed hardware diagnostic tests. Displays solid amber when powered on and the CMM has failed hardware diagnostic tests.

OK2. Software Status. Blinks green when the CMM is operational. Displays solid amber when a system software failure occurs. Blinks amber when the software is in a transitional state (e.g., when software is being downloaded to the switch).

Temperature/Fan Status LEDs

TEMP. Displays solid green when the CMM is operating within the allowed ambient temperature range. Displays solid amber if a temperature error occurs (i.e., the CMM is operating outside the temperature range).

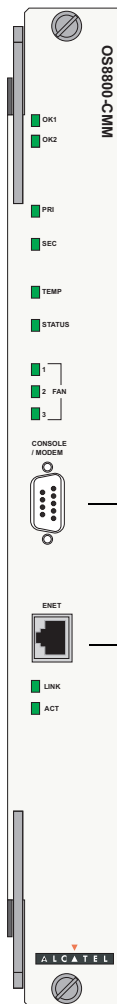
STATUS. Displays solid green when the Switch Fabric Modules (SFM) and power supplies are operating normally. Displays solid amber if there is an error in an SFM or power supply.

FAN 1. Displays solid green when the two fans in the left front fan tray are running at normal speed. Displays solid amber if a fan error occurs (i.e., one or more fans are not running at normal speed).

FAN 2. Displays solid green when the two fans in the right front fan tray are running at normal speed. Displays solid amber if a fan error occurs (i.e., one or more fans are not running at normal speed).

FAN 3. Displays solid green when the three fans in the rear fan tray are running at normal speed. Displays solid amber if a fan error occurs (i.e., one or more fans are not running at normal speed).

Module Status LEDs



Module Status LEDs

Redundancy LEDs

PRI. Displays solid green when the CMM is the primary (active) management module.

SEC. Displays solid green when the CMM is the secondary (backup) management module.

Ethernet Management Port LEDs

LINK. Link Integrity Status. Displays solid green when an Ethernet cable connection exists at the CMM's Ethernet Management Port.

ACT. Flashes green as data is transmitted or received on the CMM's Ethernet Management Port.

Console/Modem Port. The CMM's front panel provides one RS232 port for console or modem connections. By default, this female DB-9 connector provides a DCE console connection. However, by changing the onboard jumper setting, the port can be changed to a DTE modem connection.

Ethernet Management Port (EMP). The CMM's front panel also provides one Ethernet 10/100BaseT port (copper RJ-45). This port provides out-of-band network management and can be used for Telnet sessions, switch diagnostics, and for downloading software to the switch.

This 10/100BaseT port supports both 10BaseT and 100BaseT with auto-negotiation through the RJ-45 connector.

Switch Fabric Module (SFM)

OS8800-SFM Switch Fabric Modules (SFMs) allow for communication between modules such as Network Interfaces (NIs) and CMMs on the OmniSwitch 8800 product. SFMs are the link between the other removable components of a switch. A complete fabric consists of four SFM modules plus one optional module for redundancy.

SFMs are located in the rear of the switch in numbered slots specifically designed for SFMs. NIs or CMMs will not function in SFM slots.

The fabric board slots are numbered 1 to 5. In order for the switch to function, slots 1 through 4 must contain an SFM. Slot 5 is used for SFM redundancy, in the event one of the other SFMs fail. The switch will function if slot 5 is empty.

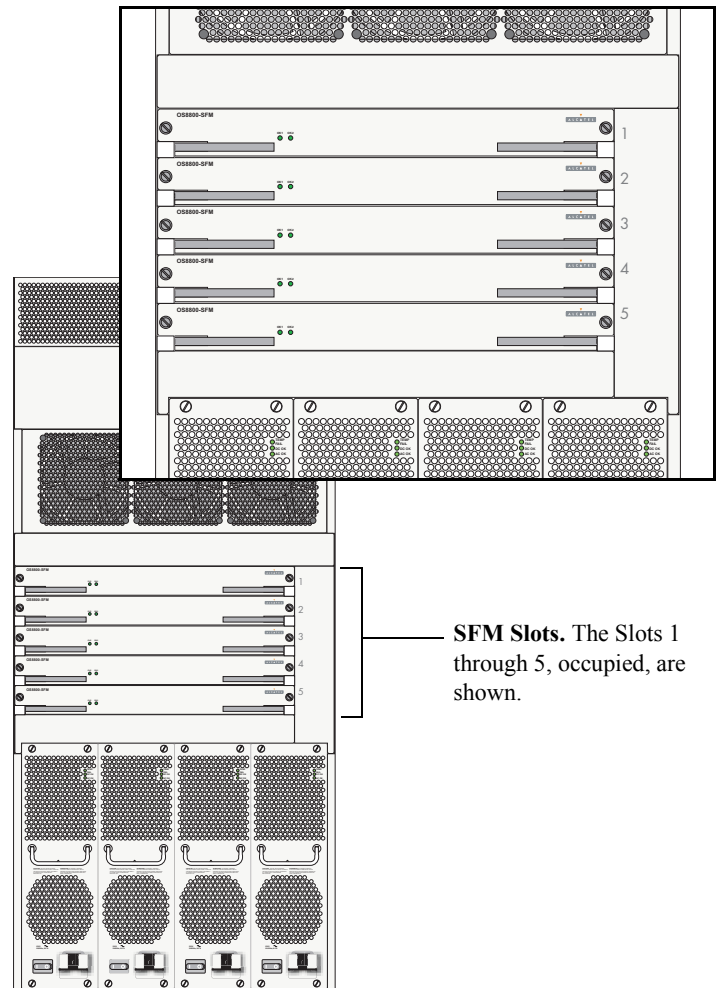
SFM Redundancy

The OmniSwitch 8800 allows for redundancy in the Switch Fabric Modules. In order for the switch to operate, there must be four working SFMs in place. A fifth SFM can be added in case one of the four fails.

If an SFM fails, and a redundant SFM is in place, then the redundant SFM takes over for the failed SFM, with no loss of switch running time. A warning message is sent to notify the switch administrator that a failure has occurred and that the redundant SFM has taken over.

For important information on SFM redundancy, refer to the “Switch Fabric Module (SFM)” chapter in your *OmniSwitch 8800 Hardware Users Guide*.

SFM Slot Locations



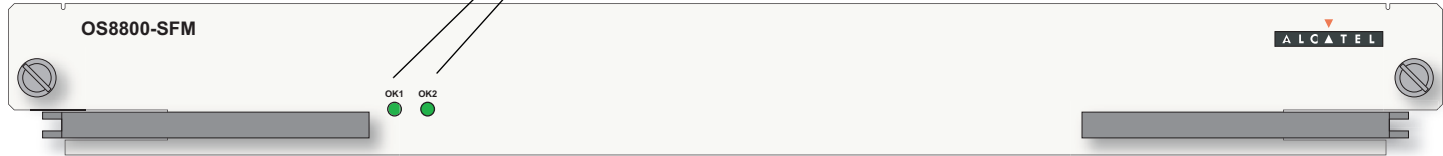
SFM Front Panel

Module Status LEDs

Module Status LEDs

OK1. Hardware Status. Displays solid green when powered on and the SFM has passed hardware diagnostic tests. Displays solid amber when powered on and the SFM has failed hardware diagnostic tests.

OK2. Software Status. Blinks green when the SFM is operational. Displays solid amber when a system software failure occurs. Displays blinking amber when the SFM unit is a redundant unit.



Network Interface (NI) Modules

The following section outlines front panel information for Network Interface (NI) modules, including LED and port descriptions. For detailed information on OS8-ENI-C24, OS8-GNI-U8, OS8-GNI-C8, OS8-GNI-U24, OS8-GNI-C24, and OS8-10GNI-UR1 modules, refer to your *OmniSwitch 8800 Hardware Users Guide*.

ENI Modules

Ethernet Network Interface (ENI) modules provide Ethernet connectivity and are available in the following port configuration:

- **OS8-ENI-C24.** Provides 24 twisted-pair RJ-45 ports, auto-negotiating *and* individually configurable as 10BaseT or 100BaseTX.

GNI Modules

The Gigabit Ethernet Network Interface (GNI) module provides up to eight 1000 Mbps (1 Gbps) connections per module. GNI modules can be used for backbone connections in networks where Gigabit Ethernet is used as the backbone media. GNI modules can also be used in the wiring closet for connections to workstations and other devices.

- **OS8-GNI-U8.** Provides 8 wire-rate 1 Gbps MiniGBIC ports that use LC connectors.

- **OS8-GNI-C8.** Provides 8 wire-rate twisted-pair 1 Gbps RJ-45 ports.
- **OS8-GNI-U24.** Provides 24 high-density 1 Gbps Mini-GBIC ports that use LC connectors.
- **OS8-GNI-C24.** Provides 24 high-density twisted-pair 10/100/1000 Mbps RJ-45 ports.

Miniature Gigabit Interface Converters (MiniGBICs)

The OS8-GNI-U8 module provides 8 Miniature Gigabit Interface Converters (MiniGBIC) slots and the OS8-GNI-U24 provides 24 MiniGBIC slots. A MiniGBIC is a Gigabit Ethernet port module that is hot-pluggable—i.e., it can be installed or removed while the GNI is powered on and operating without the risk of damage to the MiniGBIC module or the host circuitry.

When a MiniGBIC is installed, the switch automatically gathers basic MiniGBIC information via the connector's serial EEPROM interface. This information includes the MiniGBIC's capabilities, standard interfaces, manufacturer, and other information.

The following MiniGBIC types are available for OS8-GNI-U8 and OS8-GNI-U24 modules:

- **MINIGBIC-SX**—1000BaseSX multimode fiber, supports distances up to 550 meters; uses LC connectors
- **MINIGBIC-LX**—1000BaseLX single mode fiber, supports distances up to 10 km; uses LC connectors
- **MINIGBIC-LH-70**—1000BaseLH long haul single mode fiber, supports distances up to 70 km; uses LC connectors

Customers should use only Alcatel-provided MiniGBIC modules. Third party MiniGBIC modules not provided by Alcatel are not guaranteed to work properly.

10GNI Modules

OmniSwitch 8800 10 Gigabit Network Interface (10GNI) modules provide one redundant wire-rate 10000 Mbps (10 Gbps) connection per module. In addition, 10GNI modules can be used in enterprise applications including backbone connections in networks where 10 Gigabit Ethernet is used as the backbone media.

- **OS8-10GNI-UR1**. Provides two redundant Xenpak slots acting as one port. (Only one port can be active at a time.)

Xenpaks

The OS8-10GNI-UR1 provides two Xenpak slots acting as one redundant port. A Xenpak is a 10 Gigabit Ethernet port module that is hot-pluggable—i.e., it can be installed or removed while the NI is powered on and operating without the risk of damage to the MiniGBIC module or the host circuitry.

The following Xenpak types are available for OS8-10GNI-UR1 module:

- **OM-10GNI-SR**— 10GBASE-S multimode 850 nanometers (nm) fiber with a serial (one color of wavelength) transceiver, supports distances up to 300 meters over multimode fiber; uses SC connectors (high modal bandwidth fiber is required to reach 300 meters)
- **OM-10GNI-LR**— 10GBASE-L single mode 1310 nm fiber with a serial transceiver, supports distances up to 10 km over single mode fiber; uses SC connectors
- **OM-10GNI-ER**—10GBASE-E single mode 1550 nm fiber with a serial transceiver, supports distances up to 40 km over single mode fiber; uses SC connectors

Customers should use only Alcatel-provided Xenpak modules. Third party Xenpak modules not provided by Alcatel are not guaranteed to work properly.

OS8-ENI-C24 Front Panel

Module Status LEDs

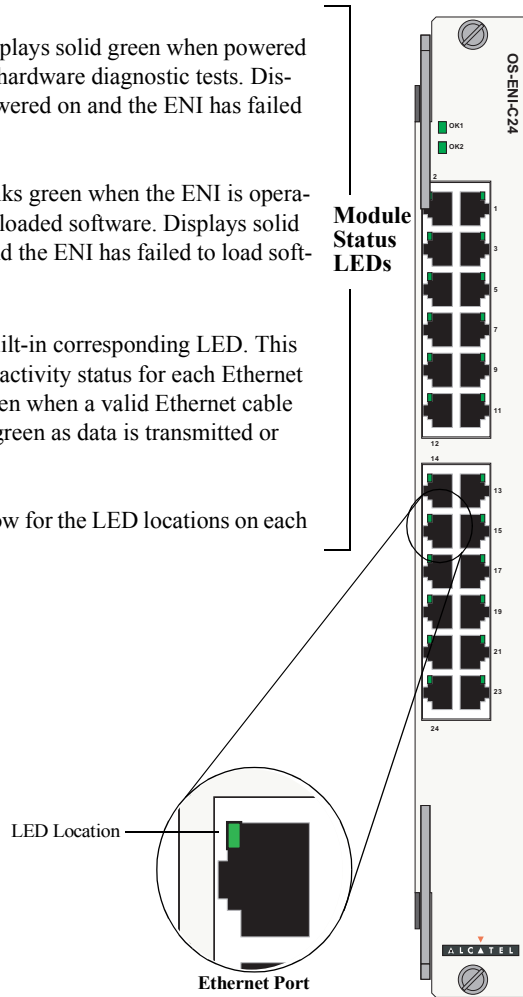
OK1. Hardware Status. Displays solid green when powered on and the ENI has passed hardware diagnostic tests. Displays solid amber when powered on and the ENI has failed hardware diagnostic tests.

OK2. Software Status. Blinks green when the ENI is operational and has successfully loaded software. Displays solid amber when powered on and the ENI has failed to load software.

Ethernet Port LEDs

Each Ethernet port has a built-in corresponding LED. This LED indicates the link and activity status for each Ethernet port. The LED displays green when a valid Ethernet cable connection exists. Flashes green as data is transmitted or received on the port.

Refer to the illustration below for the LED locations on each Ethernet port.



Module Status LEDs

Ethernet Ports

The OS8-ENI-C24 module provides 24 Ethernet ports. These ports are twisted-pair and are individually configurable as 10BaseT or 100BaseTX. The ports use RJ-45 connectors.

OS8-GNI-U8 Front Panel

Module Status LEDs

OK1. Hardware Status. Displays solid green when powered on and the GNI has passed hardware diagnostic tests. Displays solid amber when powered on and the GNI has failed hardware diagnostic tests.

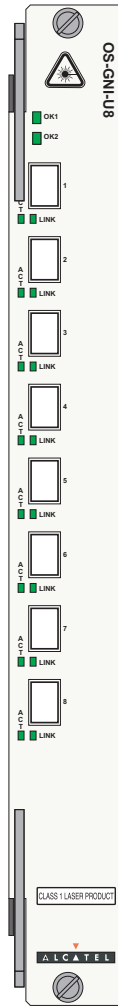
OK2. Software Status. Blinks green when the GNI is operational and has successfully loaded software. Displays solid amber when powered on and the GNI has failed to load software.

Gigabit Ethernet Port LEDs

ACT. Activity Status. Flashes green when data is transmitted or received on the corresponding Gigabit Ethernet port.

LINK. Link Integrity Status. Displays solid green when a fiber cable connection exists at the corresponding Gigabit Ethernet port.

Module Status LEDs



Gigabit Ethernet Ports

The OS8-GNI-U8 module provides eight (8) Mini-GBIC slots. These slots support the following Mini-GBIC types:

- MINIGBIC-SX—1000BaseSX multimode fiber, supports distances up to 550 meters; uses LC connectors
- MINIGBIC-LX—1000BaseLX single mode fiber, supports distances up to 10 km; uses LC connectors
- MINIGBIC-LH-70—1000BaseLH long haul fiber, supports distances up to 70 km; uses LC connectors.

Note

Refer to your *OmniSwitch 8800 Hardware Users Guide* for information on proper handling of LC connectors and fiber-optic cable.

OS8-GNI-C8 Front Panel

Module Status LEDs

OK1. Hardware Status. Displays solid green when powered on and the module has passed hardware diagnostic tests. Displays solid amber when powered on and the module has failed hardware diagnostic tests.

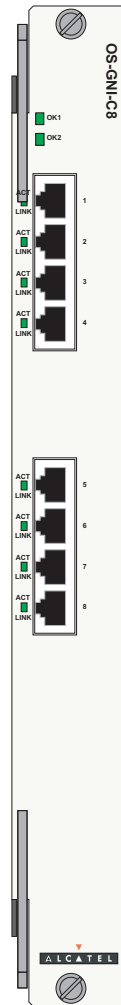
OK2. Software Status. Blinks green when the GNI is operational and has successfully loaded software. Displays solid amber when powered on and the module has failed to load software.

Gigabit Ethernet Port LEDs

ACT. Activity Status. Flashes green when data is transmitted or received on the corresponding Gigabit Ethernet port.

LINK. Link Integrity Status. Displays solid green when a fiber cable connection exists at the corresponding Gigabit Ethernet port.

Module Status LEDs



Ethernet Ports

The OS8-GNI-C8 module provides eight 1000BaseT Gigabit Ethernet ports. The ports use RJ-45 connectors.

OS8-GNI-U24 Front Panel

Module Status LEDs

OK1. Hardware Status. Displays solid green when powered on and the GNI has passed hardware diagnostic tests. Displays solid amber when powered on and the GNI has failed hardware diagnostic tests.

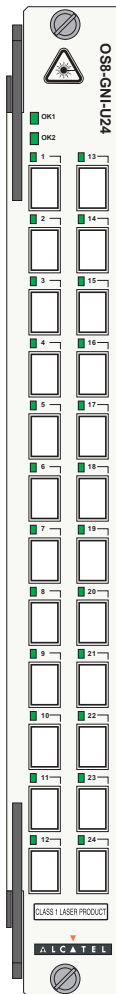
OK2. Software Status. Blinks green when the GNI is operational and has successfully loaded software. Displays solid amber when powered on and the GNI has failed to load software.

Gigabit Ethernet Port LEDs

ACT. Activity Status. Flashes green when data is transmitted or received on the corresponding Gigabit Ethernet port.

LINK. Link Integrity Status. Displays solid green when a fiber cable connection exists at the corresponding Gigabit Ethernet port.

Module Status LEDs



Gigabit Ethernet Ports

The OS8-GNI-U24 module provides twenty-four (24) MiniGBIC slots. These slots support the following MiniGBIC types:

- MINIGBIC-SX—1000BaseSX multimode fiber, supports distances up to 550 meters; uses LC connectors
- MINIGBIC-LX—1000BaseLX single mode fiber, supports distances up to 10 km; uses LC connectors
- MINIGBIC-LH-70—1000BaseLH long haul fiber, supports distances up to 70 km; uses LC connectors.

Note

Refer to your *OmniSwitch 8800 Hardware Users Guide* for information on proper handling of LC connectors and fiber-optic cable.

OS8-GNI-C24 Front Panel

Module Status LEDs

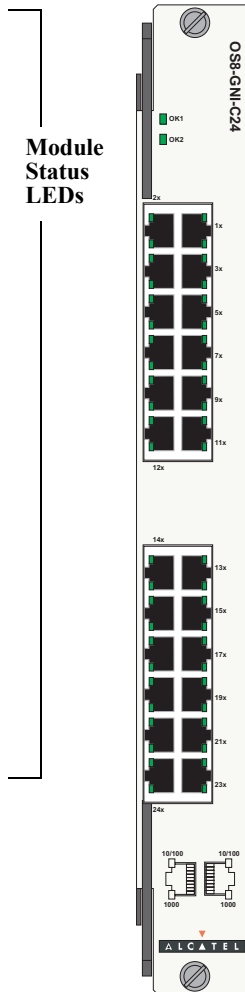
OK1. Hardware Status. Displays solid green when powered on and the module has passed hardware diagnostic tests. Displays solid amber when powered on and the module has failed hardware diagnostic tests.

OK2. Software Status. Blinks green when the GNI is operational and has successfully loaded software. Displays solid amber when powered on and the module has failed to load software.

Gigabit Ethernet Port LEDs

Each Gigabit Ethernet port has two built-in corresponding LEDs. The top LED indicates 10/100 Mbps link and activity status for the port while the bottom LED indicates 1 Gigabit link and activity status for the port. The appropriate LED displays green when a valid Ethernet cable connection exists. Flashes green as data is transmitted or received on the port.

Refer to diagram on the bottom of the NI for locations of the two (10/100 or Gigabit) LEDs.



Module Status LEDs

Gigabit Ethernet Ports

The OS8-GNI-C24 module provides 24 10/100/1000 Ethernet ports. These ports are twisted-pair and are individually configurable as 10BaseT, 100BaseTX, or 1000BaseT. The ports use RJ-45 connectors.

OS8-10GNI-UR1 Front Panel

Module Status LEDs

OK1. Hardware Status. Displays solid green when powered on and the 10GNI has passed hardware diagnostic tests. Displays solid amber when powered on and the 10GNI has failed hardware diagnostic tests.

OK2. Software Status. Blinks green when the 10GNI is operational and has successfully loaded software. Displays solid amber when powered on and the 10GNI has failed to load software.

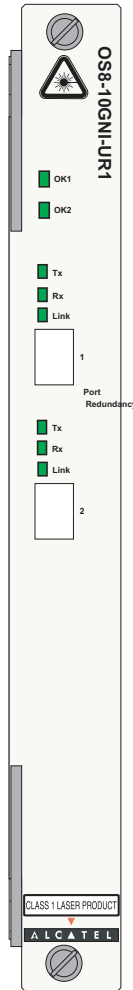
Gigabit Ethernet Port LEDs

Tx. Transmit Status. On the active port this will LED will blink green when it is transmitting data. On the inactive port this LED will always be off.

Rx. Receive Status. On the active port this will LED will blink green when it is receiving data. On the inactive port this LED will always be off.

Link. Link Status. This LED will be solid green if there is a Xenpak module plugged into the port.

Module Status LEDs



10 Gigabit Ethernet Ports

The OS8-10GNI-UR1 module provides 2 Xenpak slots, which act as one redundant port. These slots support the following Xenpak types:

- OM-10GNI-SR—10GBASE-S Multimode fiber, supports distances up to 300 meters; uses SC connectors.
- OM-10GNI-LR—10GBASE-L Single mode fiber, supports distances up to 10 km; uses SC connectors.
- OM-10GNI-ER—10GBASE-E single mode long haul fiber, supports distances up to 40 km; uses SC connectors.

Note

Refer to your *OmniSwitch 8800 Hardware Users Guide* for information on proper handling of SC connectors and fiber-optic cable.

User Documentation on CD

The CD that accompanies this *Getting Started Guide* contains comprehensive Alcatel user documentation, including the following manuals:

- *OmniSwitch 8800 Getting Started Guide*

Describes the hardware and software procedures for getting an OmniSwitch 8800 up and running. Also provides information on fundamental aspects of OmniSwitch hardware components and software architecture.

- *OmniSwitch 8800 Hardware Users Guide*

Complete technical specifications and procedures for all OmniSwitch 8800 chassis, power supplies, fans, Chassis Management Modules (CMMs), Switch Fabric Modules (SFMs), and Network Interface (NI) modules.

- *OmniSwitch CLI Reference Guide*

Complete reference to all CLI commands supported on the OmniSwitch 8800. Includes syntax definitions, default values, examples, usage guidelines, and CLI-to-MIB variable mappings.

- *OmniSwitch 7700/7800/8800 Switch Management Guide*

Includes procedures for readying an individual switch for integration into a network. Topics include the software directory architecture, image rollback protections, authenticated switch access, managing switch files, system configuration, using SNMP, and using web management software (WebView).

- *OmniSwitch 7700/7800/8800 Network Configuration Guide*

Includes network configuration procedures and descriptive information on all the major software features and protocols included in the base software package. Chapters cover Layer 2 information (Ethernet and VLAN configuration), Layer 3 information (routing protocols, such as RIP and IPX), security options (authenticated VLANs), Quality of Service (QoS), link aggregation, and server load balancing.

- *OmniSwitch 7700/7800/8800 Advanced Routing Configuration Guide*

Includes network configuration procedures and descriptive information on all the software features and protocols included in the advanced routing software package. Chapters cover multicast routing (DVMRP and PIM-SM) and OSPF.

General Information

To load the CD and access the user documentation, refer to the instructions printed on the CD packaging.

All documentation is in PDF format and requires the Adobe Acrobat Reader program for viewing. Acrobat Reader freeware is available at www.adobe.com.

Global Search. In order to take advantage of the documentation CD's global search feature, it is recommended that you select the option for *searching PDF files* when downloading Acrobat Reader freeware from the Adobe Website.

To verify that you are using Acrobat Reader with the global search option, look for the following button in the toolbar:



If you cannot locate a button with the document image behind the binoculars (as shown), then the global search feature is *not* available in the version of Acrobat Reader you are currently using.

Printing PDFs. When printing pages from the documentation PDFs, de-select Fit to Page if it is selected in your print dialog. Otherwise pages may print with slightly smaller margins.
